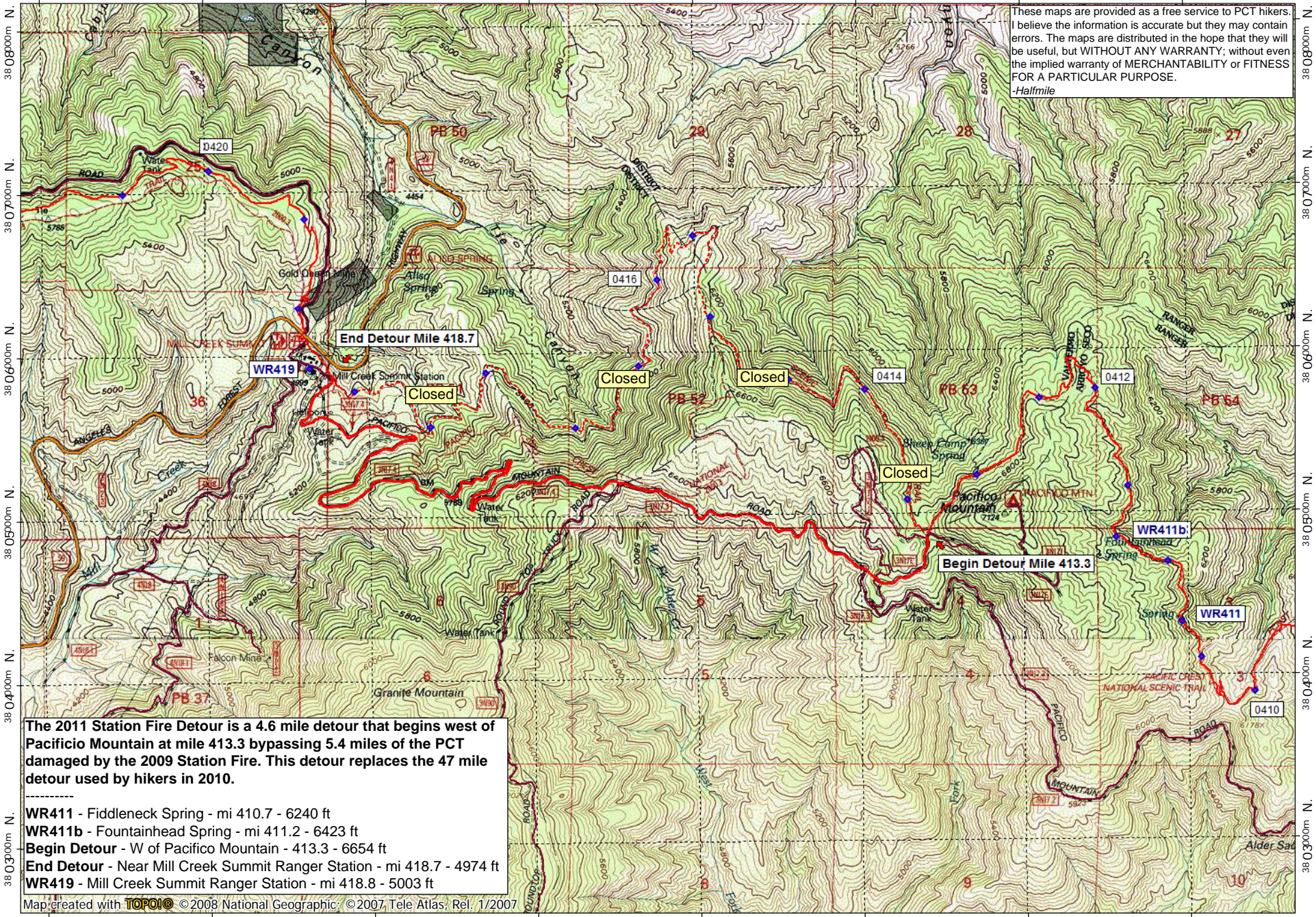


California Section D - 2011 Station Fire Detour

399000m E. 400000m E. 401000m E. 402000m E. 403000m E. 404000m E. 405000m E. WGS84 Zone 11S 406000m E.

These maps are provided as a free service to PCT hikers. I believe the information is accurate but they may contain errors. The maps are distributed in the hope that they will be useful, but WITHOUT ANY WARRANTY; without even the implied warranty of MERCHANTABILITY or FITNESS FOR A PARTICULAR PURPOSE.  
-Halfmile

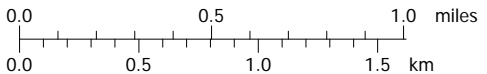


The 2011 Station Fire Detour is a 4.6 mile detour that begins west of Pacificio Mountain at mile 413.3 bypassing 5.4 miles of the PCT damaged by the 2009 Station Fire. This detour replaces the 47 mile detour used by hikers in 2010.

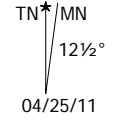
- WR411 - Fiddleneck Spring - mi 410.7 - 6240 ft
- WR411b - Fountainhead Spring - mi 411.2 - 6423 ft
- Begin Detour - W of Pacificio Mountain - 413.3 - 6654 ft
- End Detour - Near Mill Creek Summit Ranger Station - mi 418.7 - 4974 ft
- WR419 - Mill Creek Summit Ranger Station - mi 418.8 - 5003 ft

Map created with **TOPO!** © 2008 National Geographic; © 2007, Tele Atlas; Rel. 1/2007

399000m E. 400000m E. 401000m E. 402000m E. 403000m E. 404000m E. 405000m E. WGS84 Zone 11S 406000m E.



contour interval 40 feet  
1:31,680 1" = 1/2 mile  
www.pctmap.net



04/25/11