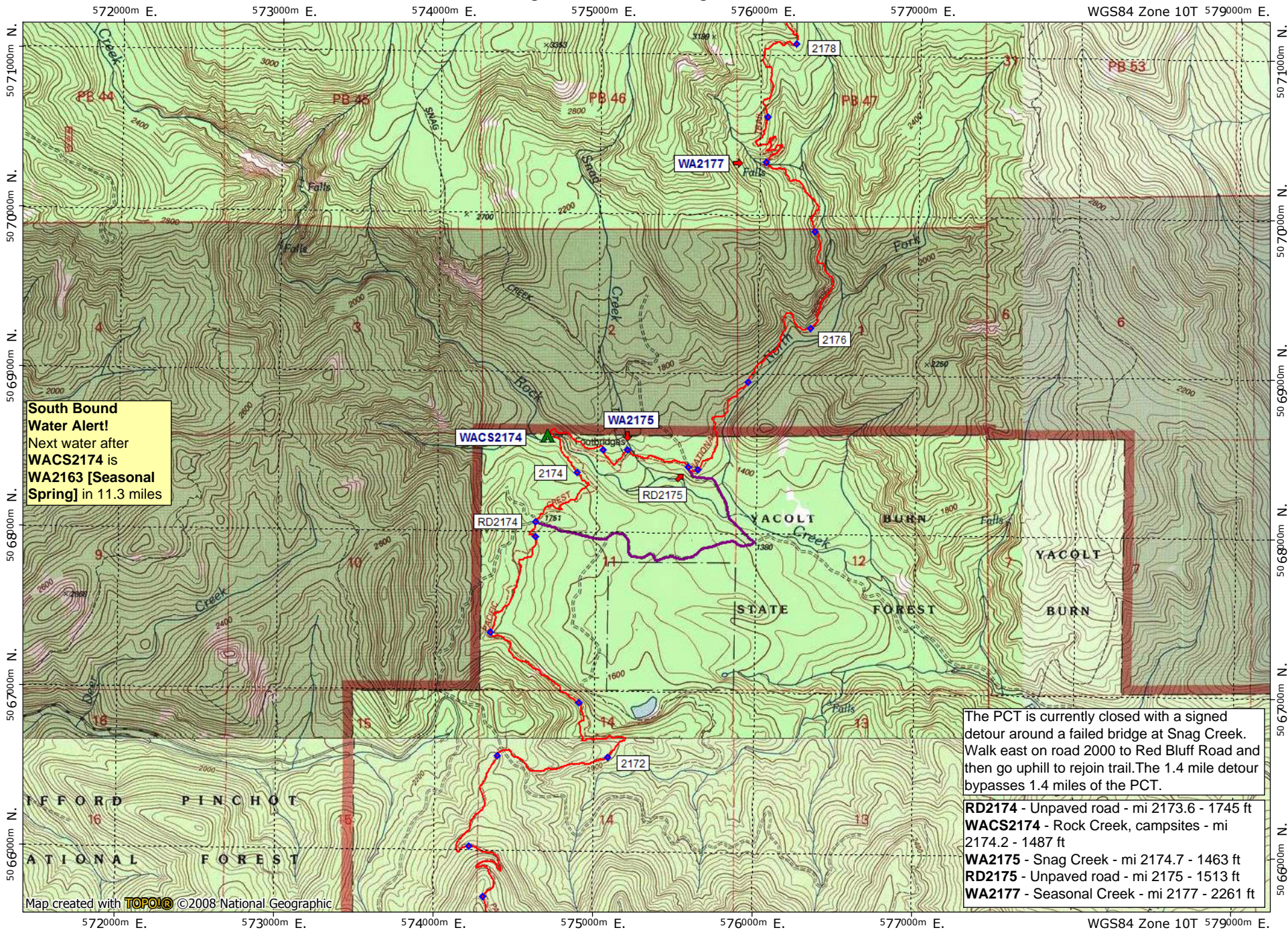


# Washington Section H - Snag Creek Detour



**South Bound Water Alert!**  
 Next water after WACS2174 is WA2163 [Seasonal Spring] in 11.3 miles

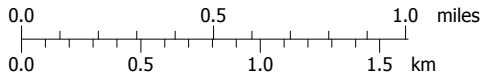
The PCT is currently closed with a signed detour around a failed bridge at Snag Creek. Walk east on road 2000 to Red Bluff Road and then go uphill to rejoin trail. The 1.4 mile detour bypasses 1.4 miles of the PCT.

- RD2174** - Unpaved road - mi 2173.6 - 1745 ft
- WACS2174** - Rock Creek, campsites - mi 2174.2 - 1487 ft
- WA2175** - Snag Creek - mi 2174.7 - 1463 ft
- RD2175** - Unpaved road - mi 2175 - 1513 ft
- WA2177** - Seasonal Creek - mi 2177 - 2261 ft

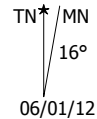
Map created with **TOPOLIC** ©2008 National Geographic



Support PCTA.org  
 Leave No Trace



contour interval 40 feet  
 1:31,680 1" = 1/2 mile  
 www.pctmap.net



06/01/12