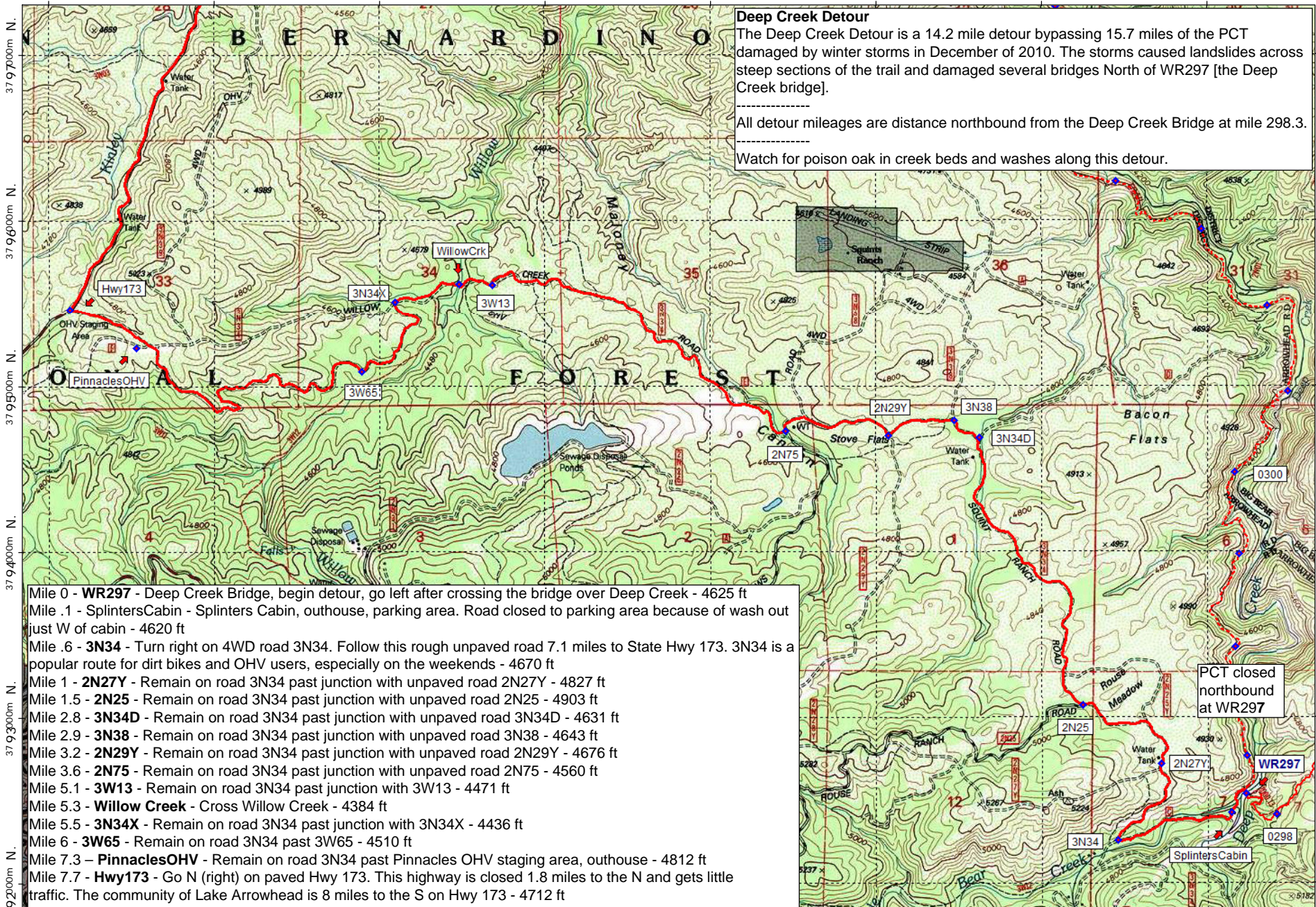


481000m E. 482000m E. 483000m E. 484000m E. 485000m E. 486000m E. 487000m E. WGS84 Zone 11S 488000m E.

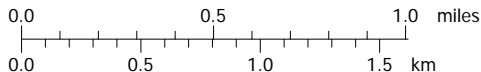
**Deep Creek Detour**  
 The Deep Creek Detour is a 14.2 mile detour bypassing 15.7 miles of the PCT damaged by winter storms in December of 2010. The storms caused landslides across steep sections of the trail and damaged several bridges North of WR297 [the Deep Creek bridge].  
 All detour mileages are distance northbound from the Deep Creek Bridge at mile 298.3.  
 Watch for poison oak in creek beds and washes along this detour.



- Mile 0 - **WR297** - Deep Creek Bridge, begin detour, go left after crossing the bridge over Deep Creek - 4625 ft
- Mile .1 - **SplintersCabin** - Splinters Cabin, outhouse, parking area. Road closed to parking area because of wash out just W of cabin - 4620 ft
- Mile .6 - **3N34** - Turn right on 4WD road 3N34. Follow this rough unpaved road 7.1 miles to State Hwy 173. 3N34 is a popular route for dirt bikes and OHV users, especially on the weekends - 4670 ft
- Mile 1 - **2N27Y** - Remain on road 3N34 past junction with unpaved road 2N27Y - 4827 ft
- Mile 1.5 - **2N25** - Remain on road 3N34 past junction with unpaved road 2N25 - 4903 ft
- Mile 2.8 - **3N34D** - Remain on road 3N34 past junction with unpaved road 3N34D - 4631 ft
- Mile 2.9 - **3N38** - Remain on road 3N34 past junction with unpaved road 3N38 - 4643 ft
- Mile 3.2 - **2N29Y** - Remain on road 3N34 past junction with unpaved road 2N29Y - 4676 ft
- Mile 3.6 - **2N75** - Remain on road 3N34 past junction with unpaved road 2N75 - 4560 ft
- Mile 5.1 - **3W13** - Remain on road 3N34 past junction with 3W13 - 4471 ft
- Mile 5.3 - **Willow Creek** - Cross Willow Creek - 4384 ft
- Mile 5.5 - **3N34X** - Remain on road 3N34 past junction with 3N34X - 4436 ft
- Mile 6 - **3W65** - Remain on road 3N34 past 3W65 - 4510 ft
- Mile 7.3 - **PinnaclesOHV** - Remain on road 3N34 past Pinnacles OHV staging area, outhouse - 4812 ft
- Mile 7.7 - **Hwy173** - Go N (right) on paved Hwy 173. This highway is closed 1.8 miles to the N and gets little traffic. The community of Lake Arrowhead is 8 miles to the S on Hwy 173 - 4712 ft

Map created with **TOPO!** ©2008 National Geographic

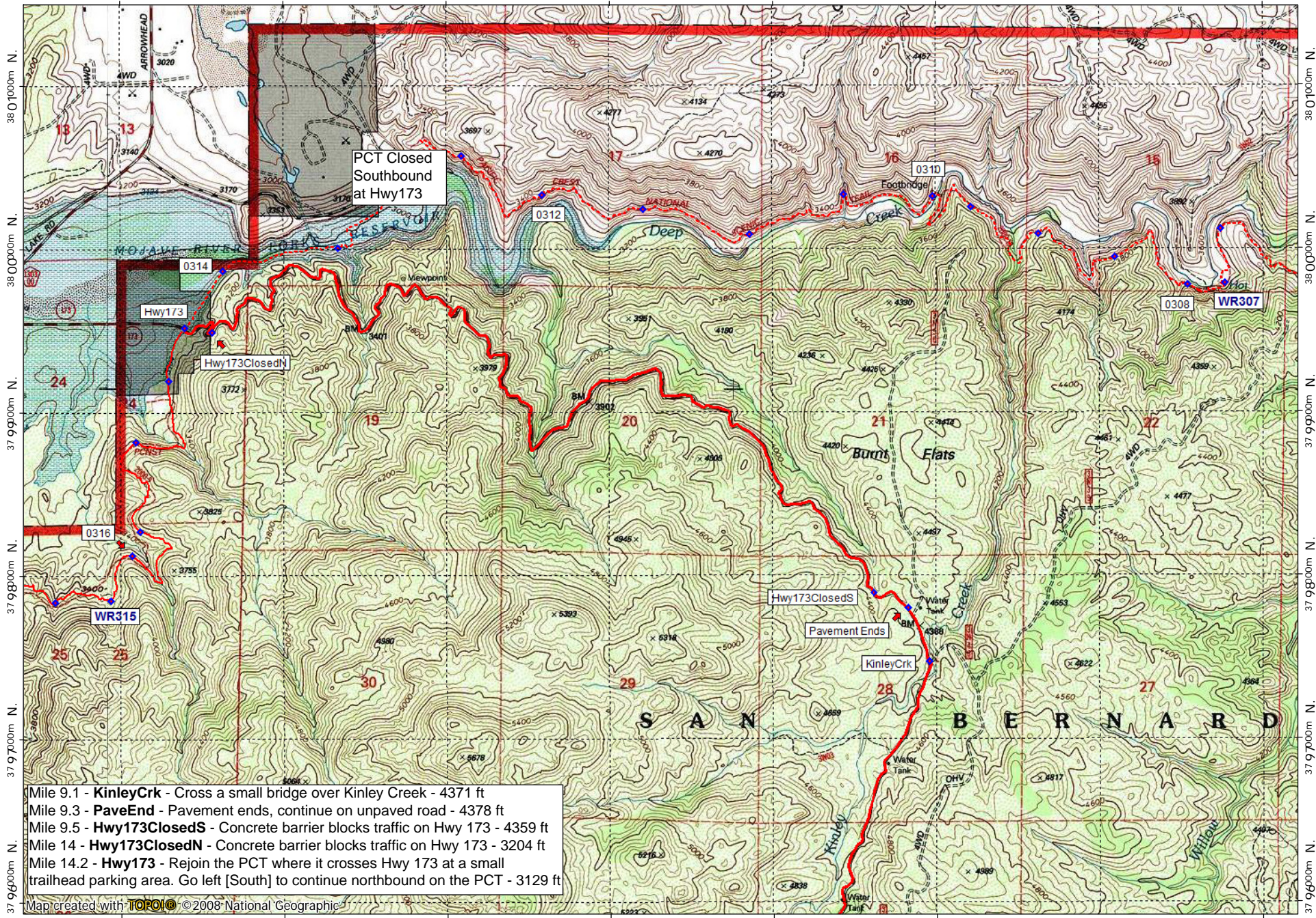
481000m E. 482000m E. 483000m E. 484000m E. 485000m E. 486000m E. 487000m E. WGS84 Zone 11S 488000m E.



Map by Halfmile  
 Contour interval 40 feet  
 1:31,680 1" = 1/2 mile

TN ↑ MN  
 12 1/2°  
 04/01/11

477000m E. 478000m E. 479000m E. 480000m E. 481000m E. 482000m E. WGS84 Zone 11S 484000m E.



PCT Closed Southbound at Hwy173

Hwy173

Hwy173ClosedN

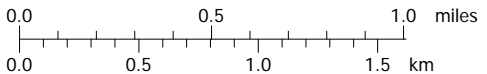
Hwy173ClosedS

Pavement Ends

KinleyCrk

Mile 9.1 - KinleyCrk - Cross a small bridge over Kinley Creek - 4371 ft  
 Mile 9.3 - PavEnd - Pavement ends, continue on unpaved road - 4378 ft  
 Mile 9.5 - Hwy173ClosedS - Concrete barrier blocks traffic on Hwy 173 - 4359 ft  
 Mile 14 - Hwy173ClosedN - Concrete barrier blocks traffic on Hwy 173 - 3204 ft  
 Mile 14.2 - Hwy173 - Rejoin the PCT where it crosses Hwy 173 at a small trailhead parking area. Go left [South] to continue northbound on the PCT - 3129 ft

Map created with TOPO! © 2008 National Geographic



Map by Halfmile  
 Contour interval 40 feet  
 1:31,680 1" = 1/2 mile

TN  
 MN  
 12 1/2°  
 04/01/11