

**TEMPORARY AREA AND USE RESTRICTIONS
FOREST SERVICE SYSTEM AREAS**

DESCHUTES NATIONAL FOREST

Pursuant to 16 USC, Title 36 CFR 261.50(a) and (b), the following special restrictions and prohibitions are established on Forest trails, and within the boundary lines of the Muskrat Fire Area on the Deschutes National Forest, Bend Ft. Rock Ranger District, where signed on the ground and as shown on the attached map and described in the map legend, hereby incorporated into this order as attachment A.

Closed National Forest Service System Trails as shown on Attachment A:

- Deer Lake Trail #6 from the Deer Lake Trailhead to the junction with Many Lakes Trail #15
- Corral Swamp Trail #8 in its entirety
- Teddy Lake Trail #5 in its entirety
- Many Lakes Trail #15 in its entirety
- Winoopee Lake Trail #16 in its entirety
- Metolius Windigo Trail #99 from the junction with Corral Swamp Trail #8 to the junction with Senoj Lake Trail #41.1

The Pacific Crest Trail remains open.

Closed National Forest Service Lands as described below and shown on Attachment A:

Lands generally described as the Pacific Crest National Scenic Trail #2000 to the West; Winoopee Lake to the junction of the Corral Swamp Trail #8 and FSR 4628 to the North, Cultus Lake to FSR 600 to the South and Corral Swamp Trailhead to Winoopee Lake Trailhead to the East.

PROHIBITIONS

Going into or being upon an area. 36 CFR § 261.52(e)

Being on a trail. 36 CFR § 261.55(a)

Entering or using a developed recreation site or portion thereof. 36 CFR § 261.58(b)

This restriction is in addition to those prohibitions enumerated in Subpart A of 36CFR§261 and any other special restrictions pertaining to the described lands.

EXEMPTIONS

Pursuant to 36 CFR§261.50(e), the following persons are exempt from this order:

1. Personnel with written authorization by a Forest Officer, which specifically authorizes the otherwise prohibited act. The issuing Officer may include such conditions as are considered necessary for the protection of the area, or for the promotion of the health, safety, or welfare of its users.

2. Any Federal, State, or local Officer or volunteer in the performance of an official duty.
3. Persons under a special use authorization that allows the otherwise prohibited action, and approved contractors and their agents directly engaged in approved work outlined in an operating plan or permit.

'Person' means natural person, corporation, company, partnership, trust, firm, or association of persons. 'Permit' means authorization in writing by a Forest Officer. 'Forest Officer' means an employee of the Forest Service.

This closure is enacted due to firefighting activities taking place within the closure area, and for the protection of public and employee safety.

This order becomes effective at 8:00 AM, August 8th, 2014, and will remain in force until rescinded.

Done at Bend, Oregon, this 8th day of August, 2014.



JOHN ALLEN
Forest Supervisor
Deschutes National Forest

VIOLATION OF THESE PROHIBITIONS IS PUNISHABLE AS A CLASS B MISDEMEANOR, BY A FINE OF NOT MORE THAN \$5,000 FOR AN INDIVIDUAL OR \$10,000 FOR A LEGAL ENTITY OTHER THAN AN INDIVIDUAL, OR IMPRISONMENT FOR NOT MORE THAN SIX (6) MONTHS, OR BOTH. TITLE 16 USC, SECTION 551; TITLE 18 USC, SECTION 3551.

R. 8 E.

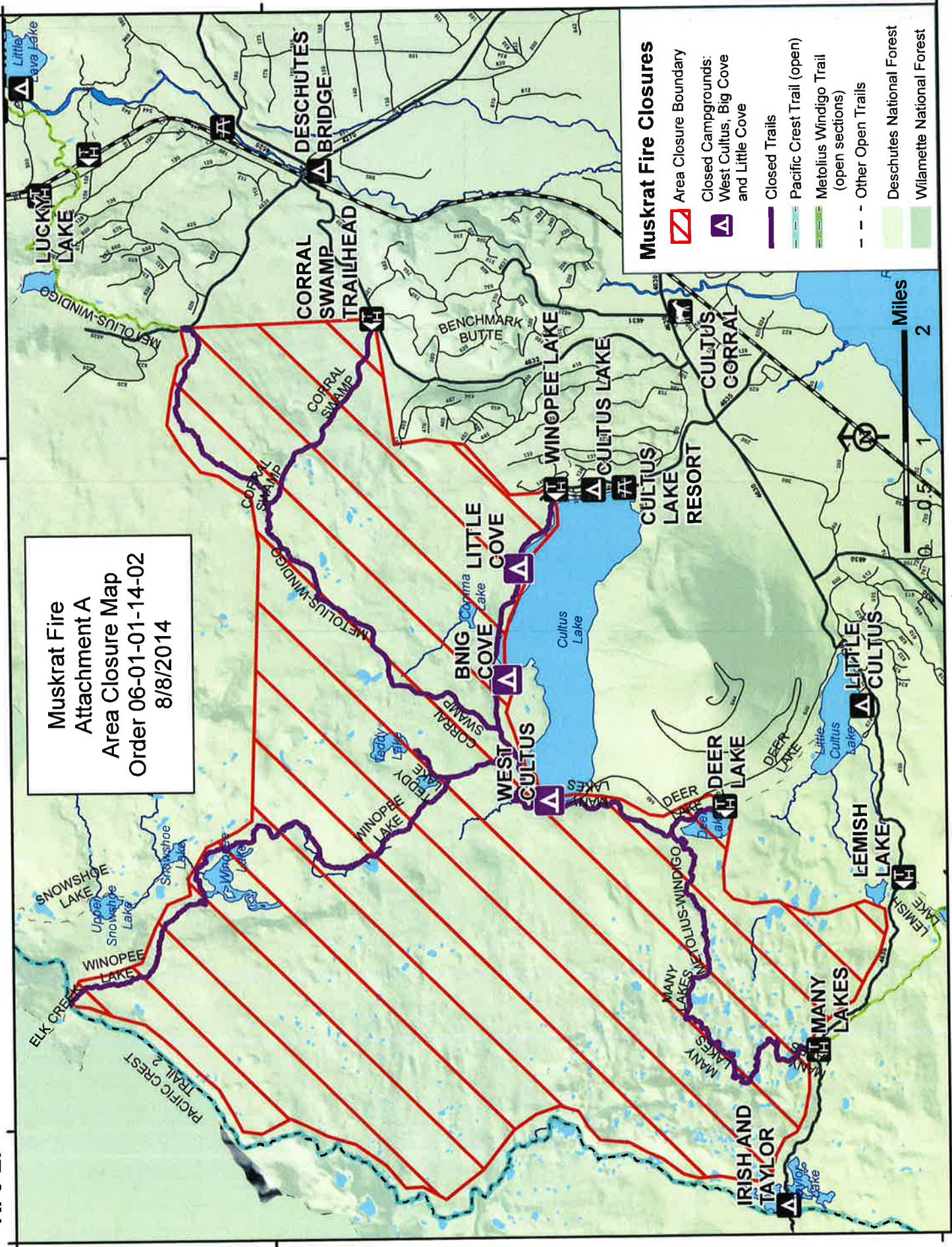
R. 7 E.

R. 6 E.









T. 19 S.

T. 20 S.

Muskrat Fire
 Attachment A
 Area Closure Map
 Order 06-01-01-14-02
 8/8/2014



Muskrat Fire Closures

-  Area Closure Boundary
-  Closed Campgrounds:
West Cultus, Big Cove
and Little Cove
-  Closed Trails
-  Pacific Crest Trail (open)
-  Metolius Windigo Trail
(open sections)
-  Other Open Trails
-  Deschutes National Forest
-  Willamette National Forest

