



## **FY2019 Appropriations Request**

*The Pacific Crest Trail Association (PCTA) respectfully asks Congress to support the following FY2019 appropriations to protect, preserve and promote the Pacific Crest National Scenic Trail (PCT):*

### **I. Land & Water Conservation Fund (LWCF)**

**\$8.392 million**

#### **U.S. Forest Service (USFS) Budget Request**

- California—Trinity Divide, trail and scenic resource protection within the Shasta-Trinity National Forest. (\$8.142 million)

This is the third phase of a larger project to acquire approximately 10,600 privately owned acres along a 30-mile stretch of the PCT. The Trinity Divide project contains 17 miles of the PCT on private land owned and managed by a timber company with just a 10-foot-wide trail easement. This project would consolidate more than 25,000 acres managed by the Forest Service along the Trinity Divide, which separates the Sacramento and Trinity river basins and includes one of the most botanically rich and unique landscapes in the world.

- LWCF line item for program administration (\$250,000)

### **II. Capital Improvement & Maintenance - Trails (CMTL)**

**\$2.5 million**

**\$2.5 million—allocation for PCT in the USFS Region 5 CMTL account to fund the following ongoing programs:**

- Adequate Forest Service trailwide management staff
- Forest/Project Planning & optimal trail location reviews
- Challenge Cost Share Agreement with the PCTA and other private partners to support volunteer trail maintenance and public education programs
- Trail maintenance, construction, reconstruction
- Trail information for hikers and horseback riders, including *Leave No Trace*, permit applications and other educational materials
- Trail management and operations
- Youth and Corps Trail Crew Programs

### **III. Trail Maintenance**

**\$500,000**

#### **National Park Service (NPS) Budget Request: \$200,000**

- Line item for PCT maintenance on NPS lands

#### **Bureau of Land Management (BLM) Budget Request: \$300,000**

- Line item for PCT maintenance on BLM lands





## Trail Funding Justification - FY2019

1. The U.S. Forest Service has overall responsibility for the PCT.
2. Operational responsibility is shared with:
  - **National Park Service**
  - **Bureau of Land Management**
  - **Several state and county parks in California, Oregon, and Washington**
3. The nonprofit Pacific Crest Trail Association is the major private partner of the federal government and California State Parks as codified in a Memorandum of Understanding with these agencies.
4. The PCTA leverages limited federal dollars through the extensive use of volunteers and private donations to ensure the PCT is protected, preserved and promoted as a world-class experience for hikers and equestrians, and for all the values provided by wild and scenic lands.

### Pacific Crest Trail Association Contribution

Our private/public partnership continues to produce outstanding results in the spirit of citizen stewardship as sought by Congress in the 1968 National Trails System Act.

- **Volunteer hours are a regular significant contribution.**
- **Five PCTA Regional Representatives cover 2,200 miles of the PCT and provide volunteer support through local offices.**
- **Volunteers have access to trail project information, training, tools and supplies.**
- **PCTA continues to raise a significant amount of private funds.**

### Hours and Funds Contributed

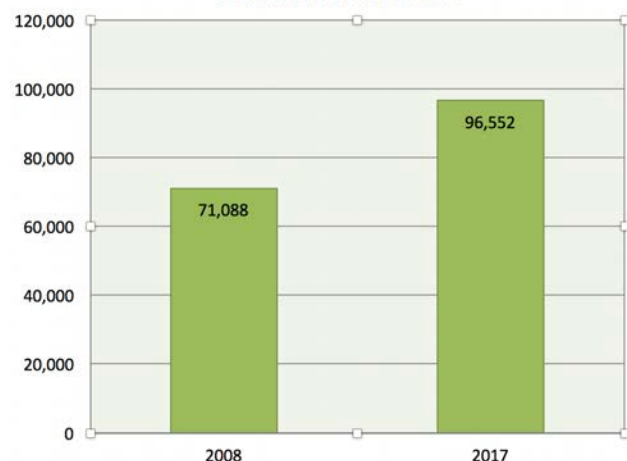
#### 2017

Volunteer Hours: **96,552**  
Value of Volunteer Hours: **\$2,330,765**  
Private Dollars Raised: **\$2,294,189**  
Total PCTA Contribution: **\$4,624,954**

#### 10-Year Total

Volunteer hours **963,913**  
Value of Volunteer Hours: **\$21,603,577**  
Private Dollars Raised: **\$14,344,626**  
Total PCTA Contribution: **\$35,948,203**

Volunteer Hours





## Land & Water Conservation Fund (LWCF): \$8.392 million

### LWCF REQUEST

#### 1. U.S. Forest Service PCT Corridor Acquisitions:

Priority Projects	State	Congressional District	REQUEST
Trinity Divide	CA	CA-01 and CA-02	\$8,142,000

#### 2. Forest Service Program Administration:

\$ 250,000

#### TOTAL LWCF REQUEST:

**\$8,392,000**

### Why is this needed?

For most of the 2,650 miles of the Pacific Crest Trail, hikers and horseback riders can experience some of the most sublime outdoor scenery in the world. But, in far too many spots along the way, this experience is harshly interrupted by stretches of private land with logged-over areas, inappropriate barriers and incompatible development.

Fifty years after the 1968 passage of the National Trails System Act by which Congress designated the PCT as one of the first National Scenic Trails, it is still not completely protected. Approximately 10% is still held by private landowners. This iconic trail that attracts outdoor lovers from all 50 states and across the world remains marred by inadequate public rights to travel and to protect the user's experience through what should be a gorgeous and wild landscape.

### The Land and Water Conservation Fund is crucial in the effort to complete the PCT...

- The U.S. Forest Service, with its partner public agencies and the Pacific Crest Trail Association, has identified priority parcels for purchase from willing private sellers.
- In recent years, LWCF appropriations have not been adequate to keep the PCT land acquisition program on track.
- Opportunities to purchase properties along the PCT constantly come and go. When those opportunities are missed, the land can be permanently altered in ways that conflict with the desired PCT experience.

**...thus, it is urgent for the Forest Service to continue its efforts to identify and secure those parcels essential to the trail and the experience it provides.**





## Trinity Divide Phase 3

### *Project Details*

**LWCF Request:** \$8,142,000

**Congressional Districts:** CA-01 and CA-02

**Representatives:** LaMalfa & Huffman

**Acres:** 4,071 of 10,600

**Number of Tracts:** 7 of 27

**Acquiring Agency:** Forest Service



**Project Description:** The Trinity Divide Project is accessible by two popular trailheads for the PCT and is a 30-minute drive from Interstate 5 on the Trinity Heritage Scenic Byway. Located near the rural communities of Dunsmuir and Mt. Shasta City, much of this portion of the PCT is accessible for day hikes and weekend backpacking trips and rewards trail users with stunning views of the Trinity Alps and Mount Shasta. These parcels are the third phase of a larger project to acquire approximately 10,600 acres of privately owned checkerboard lands along a 30-mile stretch of the PCT.

- The Trinity Divide project contains 17 miles of the PCT on private land owned and managed by a timber company with just a 10-foot-wide trail easement for the PCT.
- This project would consolidate more than 25,000 acres of land managed by the Forest Service along the Trinity Divide, which separates the Sacramento and Trinity river basins and includes one of the most botanically rich and unique landscapes in the world.
- The region has a vast number of natural springs along the upper elevations that make this area important for water supply. These springs provide a year-round cold water source into the headwaters of the Trinity River for fisheries and other wildlife.

**Benefits of Protection:** The acquisition will provide crucial scenic protection to the PCT in a popular stretch of the trail and expand recreational opportunities and access to numerous lakes, springs, and trout streams as well as enable the Forest Service to develop spur and connector trails into the PCT to create loop hikes.

**Threats to the Landscape:** There are several risks to the scenic viewshed of the PCT if these parcels remain in private ownership, including additional timber harvesting along the trail, road building and log landings, and possible sale to other buyers who could subdivide and develop the property along the PCT corridor.

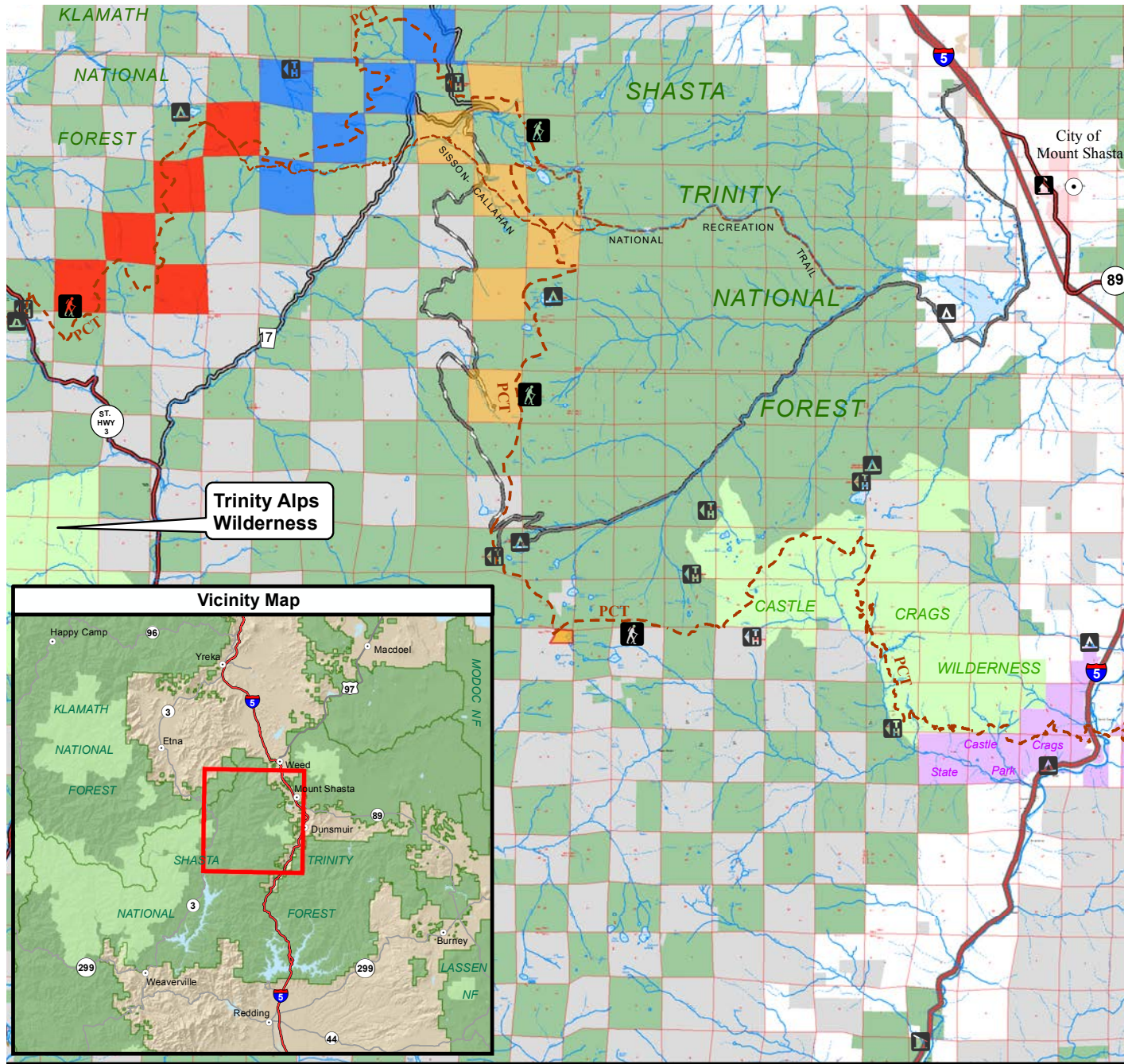
**Partner Contributions:** The Pacific Crest Trail Association and The Trust for Public Land have secured a \$5 million private foundation grant to cover a portion of the purchase price of the Trinity Divide project. We have also raised private funds to help cover the project due diligence costs for the Forest Service acquisition, including appraisals, Phase 1 environmental site assessments and title reviews.



# Trinity Divide Phase 3: Pacific Crest National Scenic Trail

## Core Proposal - Land and Water Conservation Fund

### Fiscal Year 2019



#### References

Data acquired from a variety of sources of differing accuracy, precision and reliability. Features represented by these data may not represent accurate geographic locations.

#### Disclaimer

The USDA Forest Service makes no warranty, expressed or implied regarding the data displayed on this map, and reserves the right to correct, update, modify, or replace this information without notification.

- Pacific Crest Nat'l Scenic Trail
- Phase III-FY 2019 requested
- Phase I-FY 2017 funded
- Phase II-FY 2018 requested
- Non-National Forest System Lands Outside National Forest Boundary
- Non-National Forest System Lands Within National Forest Boundary
- National Forest System Lands
- National Forest System Wilderness



0 1.25 2.5 5 Miles

Map Creation Date - 07/27/2017  
Pacific Southwest Region- Geospatial Services

#### Trinity Divide Phase III- Pacific Crest Nat'l Scenic Trail Core Proposal- Land and Water Conservation Fund Fiscal Year 2019

The Land and Water Conservation Fund Act of 1965  
The Organic Act of 1956  
National Trails System Act of 1968

Township 38 North, Range 6 West, Section 1  
Township 39 North, Range 6 West, Section 11  
Township 40 North, Range 6 West, Sections 11, 15, 23, 25, 35  
Mt. Diablo Meridian, Trinity and Siskiyou Counties, CA

USDA Forest Service- Pacific Southwest Region  
Klamath and Shasta-Trinity National Forests  
US Congressional District 1 & 2

Copies of this map are available for public inspection in the  
Office of the Regional Forester, Pacific Southwest Region, Vallejo, CA



## Capital Improvement & Maintenance - Trails (CMTL) USFS: \$2.5 million

### CMTL Request:

Allocate \$2.5 million for the PCT in the USFS CMTL-PC line item to fund the following ongoing programs in USFS Regions 4, 5 and 6:

- Adequate Forest Service trailwide management staff
- Forest/Project Planning & optimal trail location reviews
- Challenge Cost Share Agreement with the PCTA and other private partners to support volunteer trail maintenance and public education programs
- Trail maintenance, construction, reconstruction
- Trail information for hikers and horseback riders, including Leave No Trace, permit applications and other educational materials
- Trail management and operations
- Youth and Corps Trail Crew Programs

**NEED:** Every year, the Pacific Crest Trail Association (PCTA) sees a rising threat to public access—insufficient funding to maintain and reconstruct trails for a variety of users. Easy access to public lands through safe and well-maintained trails drives a considerable recreation economy. The economic impacts of trails can be seen in small, rural communities surrounding our nation's popular national forests and parks. And outdoor retailers do a booming business supplying enthusiasts for a variety of outdoor pursuits. This economic benefit is not unique to the PCT, and the PCTA urges an overall increase in the entire USFS CMTL budget, especially as it funds work on all the National Scenic and Historic Trails.

**Funding Shortfall:** On the PCT, federal funding in past fiscal years has been far below what's needed to keep the trail safe and passable for the public or to respond to disasters such as landslides, washouts, and wildfires. This results in a continuing maintenance backlog and reduced access to public lands.

- Public interest in the PCT is at an all-time high.
- Increased use brings more user impacts to the trail, which must be addressed through education and maintenance.

In 2012, the U.S. Government Accounting Office suggested that enhanced training and collaboration with volunteer groups was a good way to reduce the maintenance backlog. Year after year, dedicated PCTA volunteers rebuild washed-out bridges, cut away fallen trees and restore eroded portions of the trail.

**In 2017, PCTA volunteers and corps crews maintained 1,781 miles of the PCT and built or rebuilt 25 miles.**

With more robust and sustainable federal funding, we would be able to do much more. Hikers and horseback riders will tell you that the PCT is one of the finest wilderness trail experiences in existence. We don't want to lose that.





## Capital Improvement & Maintenance - Trails (CMTL) - *continued*

Our volunteers cannot be successful without government support. Volunteers need tools, training classes, food and transportation so their efforts are most effective and will do the most good. The Forest Service must purchase materials to rebuild bridges, plan work projects effectively and otherwise ensure that the PCT continues to be a world-class trail for the hundreds of thousands of users who expect to go out and enjoy it.

Each year, the Pacific Crest Trail Association raises significant private funding. Federal support of the PCTA triggers its ability to raise more private money to energize volunteers. We urge Congress to support this reasonable appropriation for the Forest Service to dedicate to PCT maintenance. Programs administered within this budget are programs that “give back” to youths, to rural communities and to the general public.

The youth corps and volunteers learn skills in forestry and trail maintenance and gain experience in cooperation and leadership. Jobs are created in rural areas, while visitors from all over the world spend their recreation and tourism dollars in communities along the trail. At the same time, the ongoing work of keeping the trail accessible is achieved. These programs represent what can be accomplished when people work across boundaries toward a common goal.

## Trail Maintenance—NPS and BLM: \$500,000

### PCT Maintenance Request:

- **\$200,000 to the National Park Service**
- **\$300,000 to the Bureau of Land Management**

**NEED:** This appropriation is necessary to meet the demand for federal agency direct work and coordination of volunteer crews that maintain and repair the PCT in six National Parks and several BLM National Monuments and districts on more than 600 miles of the PCT.

**PROGRESS:** Since 2008, PCTA has done work under a long-term Challenge Cost Share Agreement with the BLM, which provides funding for the support of volunteer work projects on BLM lands. PCTA volunteers and staff worked with BLM and local volunteers to perform needed maintenance and repairs in California and Oregon.

**During 2017, 2,116 volunteers, in cooperation with federal agency and private partners, donated 96,552 hours of service to the PCTA.**







## Youth Trail Crew Programs



*A youth crew on the Pacific Crest Trail.*

Pacific Crest Trail Association's youth programs play an important role for the future of the Pacific Crest Trail. Through these programs, the PCTA helps introduce the great outdoors to young people who will one day be there as its stewards while teaching them practical leadership skills and a work ethic that will serve them throughout their lives. These crews often are paired with volunteers, exposing them to the ethic of giving their time in benefit to their community. They take on both large and small trail maintenance and improvement projects, from clearing short storm-affected sections to building new long stretches of rerouted trail.

### Environmental Charter Schools

- Since 2007, these award-winning middle and high schools in inner-city Los Angeles have worked with economically disadvantaged youths who volunteer on the PCT.
- Prepares students for four-year colleges using the environment as a lens for real-life learning.
- Strengthens student understanding and application of environmental practices through sustainability-minded coursework, service learning, internships and capstone projects related to social or environmental issues.
- In 2017, Environmental Charter school students contributed 960 service hours to the PCT.

### American Conservation Experience (ACE)

- Provides jobs and job training for 18- to 25-year-olds considering land management as a career path or course of study.
- Professionally supervised teams learn practical skills and develop confidence as emerging leaders in conservation.
- Participants gain invaluable career perspectives working alongside professionals with the National Park Service, U.S. Forest Service, Bureau of Land Management and many other public land stewards.
- In 2017, ACE crews contributed 13,000 service hours to the PCT.





## Youth Trail Crew Programs - continued

### AmeriCorps National Civilian Community Corps (NCCC)

- Strengthens communities and develops leaders through direct, team-based national and community service.
- Drawn from the successful models of the Civilian Conservation Corps and the U.S. military.
- Built on the belief in civic responsibility and national service programs.
- In partnership with nonprofits, federal and local governments, national and state parks, Native American tribes and schools, members complete service projects.
- In 2017, NCCC members contributed 3,700 service hours on the PCT.

### New Currents

- Builds land management and leadership skills in youths.
- Since 2014, New Currents, Outdoors in Portland, Oregon, has worked to get urban youths ages 12 to 17 involved in environmental education, hiking, camping, and recreating on public lands.
- In 2017, 15 youths from Vancouver, Wash., contributed more than 300 hours cutting back brush and improving drainage features on the PCT in the Columbia River Gorge National Scenic Area.



*An Outward Bound trail crew in the Pacific Northwest.*

### Bellevue College

- Wilderness Skills Certificate program provides job training and prepares students for a wide range of personal and professional opportunities in recreation, outdoor leadership and education.
- Quarterly outdoor classes and outings for students, staff, and faculty.
- 2017 was the third year that students from the college's Backpacking & Orienteering course performed volunteer service on the PCT. Twelve youths contributed 90 hours of service on the PCT.

### Outward Bound

- Nonprofit that provides challenging learning expeditions that inspire strength of character, leadership and service to others.
- In 2017, Outward Bound crews contributed more than 1,200 hours of trail work on the PCT.



## PCT Fact Sheet



- **2,650 miles** from Mexico to Canada through California, Oregon and Washington.
- Designated for **hiking and horseback use**; bicycles and motorized vehicles are prohibited.
- Dedicated “complete” in 1993, though **10 percent remains on private property**.
- Passes through **six of North America’s seven ecozones**, including high and low desert, old-growth forest and alpine country.
- From **scorching desert valleys** in Southern California to **rainforests** in the Pacific Northwest, the PCT offers hikers and equestrians a unique, varied experience.
- Passes through **25 national forests, 48 federal wilderness areas, and 6 national parks**.
- Passes the nation’s **three deepest lakes**:  
Tahoe (1,645 feet),  
Crater (1,932 feet) and  
Chelan (1,149 feet).
- Climbs **60 major mountain passes**.
- **Highest point**: Forester Pass, California: 13,153’  
**Lowest Point**: Bridge of the Gods, Cascade Locks, Oregon: 180’.
- The Pacific Crest Trail includes 170 miles of the 211-mile **John Muir Trail**, what many have called the finest mountain scenery in North America. The JMT runs from **Yosemite National Park** south to the summit of Mount Whitney, at 14,505 feet, the **highest peak in the lower 48 states**.

**To learn more, visit [www.pcta.org](http://www.pcta.org)**







Protecting America's Greatest  
Wilderness Trail Experience

PCTA Fact Sheet

- Volunteers formed the Pacific Crest Trail Association in **1977** to protect, preserve and promote the trail for future generations. Today we have **13,000 members** and our support continues to grow.
- Our **nonprofit 501(c)(3)** is governed by a **14-member volunteer Board of Directors** who serve 3-year terms.
- Our home office is in **Sacramento, California**, and our **staff of 26** works there and in satellite offices along the trail in California, Oregon and Washington.
- We partner with **U.S. Forest Service, Bureau of Land Management, National Park Service, California State Parks** and many nonprofit groups to maintain and advocate for the trail.

2018 Operating Budget Revenue

\$2,160,000	60%	Individual members and trail users
\$ 300,000	8%	Corporate and outdoor industry partnerships
\$ 190,000	5%	Foundations
\$ 930,000	27%	Federal agency partners
<b>\$3,580,000</b>	<b>100%</b>	<b>TOTAL</b>







## PCTA Fact Sheet (continued)

• The PCTA is the **only conservation organization** solely dedicated to protecting and maintaining the entire Pacific Crest Trail on behalf of the public. Our long-term vision is that the entire PCT corridor is permanently protected, well maintained and effectively managed.



- The PCT is world-renowned for offering a rare opportunity to travel through exceptionally scenic, remote, primitive landscapes, and **the PCTA is widely recognized as the trail's champion and steward**. We achieve our goals through honest collaboration, openness and the strength of our partnerships, staff, volunteers and a dedicated trail community.
- We see our protection role as helping to **preserve and manage the land around the trail in order to preserve the best user experiences possible**. We have a Land Protection Program aimed at purchasing properties that are in danger of being developed.
- Roughly **10 percent of the trail is still on private property**. Our land survey identified about 1,500 parcels—just over 200,000 acres – that need protection.
- In an effort to maintain the trail for generations to come, we work with hundreds of volunteers and other wilderness preservation groups, clearing brush and downed trees, rebuilding log bridges over streams and constructing rock buttresses in the high country. The trail is a constant work in progress.
- We have **more than 2,000 volunteers** who are experts in everything from trail building to tool maintenance. Our **Trail Skills College, a nationally recognized training program**, teaches volunteers from trail groups across the country to strive for a high level of safety and expertise while developing future leaders.
- Some of our most dedicated and passionate team members are the **horse packers** who haul gear and supplies for crews working in remote areas.
- We leverage the money we raise to support our volunteer programs. **From 2008 to 2017, the PCTA raised more than \$14 million while our volunteers gave 964,000 hours of service, an in-kind value of \$21.6 million.**

**You can help by becoming a PCTA member.**  
**Visit us at [www.pcta.org](http://www.pcta.org) or call us at 916-285-1846.**



and California Congressional Districts,  
115th United States Congress



Dianne Feinstein (D)  
Kamala Harris (D)

- 1 Doug LaMalfa(R)
- 2 Jared Huffman (D)
- 3 John Garamendi (D)
- 4 Tom McClintock (R)
- 5 Mike Thompson (D)
- 6 Doris Matsui (D)
- 7 Ami Bera (D)
- 8 Paul Cook (R)
- 9 Jerry McNERney (D)
- 10 Jeff Denham (R)
- 11 Mark DeSaulnier (D)
- 12 Nancy Pelosi (D)
- 13 Barbara Lee (D)
- 14 Jackie Speier (D)
- 15 Eric Swalwell (D)
- 16 Jim Costa (D)
- 17 Ro Khanna (D)
- 18 Anna Eshoo (D)
- 19 Zoe Lofgren (D)
- 20 Jimmy Panetta (D)
- 21 David Valadao (R)
- 22 Devin Nunes (R)
- 23 Kevin McCarthy (R)
- 24 Salud Carbajal (D)

- 25 Steve Knight (R)  
26 Julia Brownley (D)  
27 Judy Chu (D)  
28 Adam Schiff (D)  
29 Tony Cardenas (D)  
30 Brad Sherman (D)  
31 Pete Aguilar (D)  
32 Grace Napolitano (D)  
33 Ted Lieu (D)  
34 Jimmy Gomez (D)  
35 Norma Torres (D)  
36 Raul Ruiz (D)  
37 Karen Bass (D)  
38 Linda Sanchez (D)

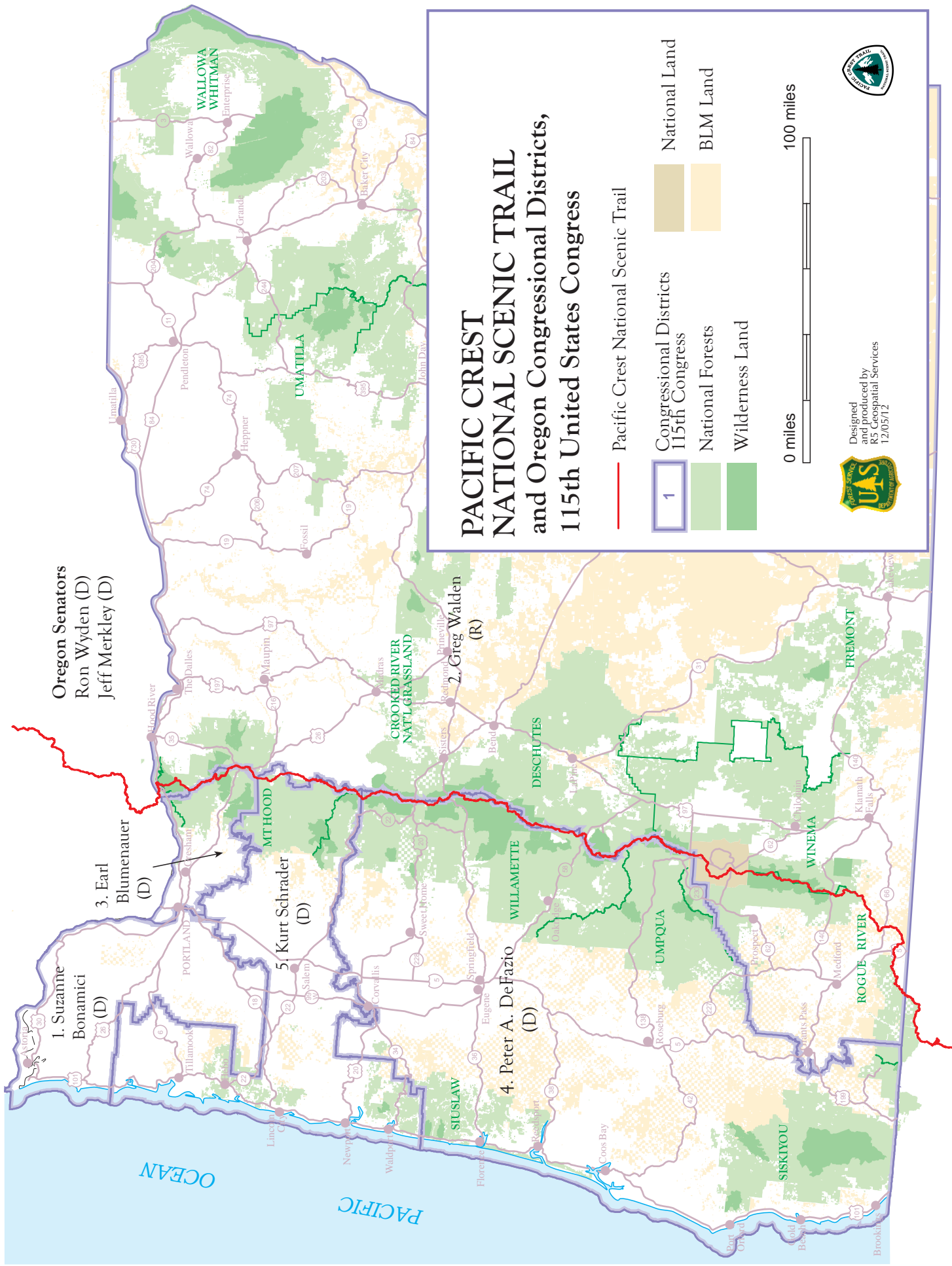
- 39 Ed Royce (R)  
40 Lucille Roybal-Allard (D)  
41 Mark Takano (D)  
42 Ken Calvert (R)  
43 Maxine Waters (D)  
44 Nanette Barragán (D)  
45 Mimi Walters (R)

- 46 Lou Correa (D)  
47 Alan Lowenthal (D)  
48 Dana Rohrabacher (R)  
49 Darrell Issa (R)  
50 Duncan Hunter (R)  
51 Juan Vargas (D)  
52 Scott Peters (D)  
53 Susan Davis (D)



Designed  
and produced by  
R5 Geospatial Services  
12/05/12





Oregon Senators  
Ron Wyden (D)  
Jeff Merkley (D)

3. Earl Blumenauer (D)

1. Suzanne Bonamici (D)

5. Kurt Schrader (D)

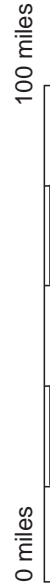
4. Peter A. DeFazio (D)

2. Greg Walden (R)

# PACIFIC CREST NATIONAL SCENIC TRAIL and Oregon Congressional Districts, 115th United States Congress

Pacific Crest National Scenic Trail

- 1 Congressional Districts 115th Congress
- National Forests
- Wilderness Land
- National Land
- BLM Land



Designed and produced by  
R5 Geospatial Services  
12/05/12





Washington Senators  
 Patty Murray (D)  
 Maria Cantwell (D)

9. Adam Smith (D)

7. Pramila  
 Jayapal (D)

2. Rick Larsen  
 (D)

1. Suzan DelBene  
 (D)

6. Derek Kilmer  
 (D)

8. David G.  
 Reichert  
 (R)

10. Dennis Heck  
 (D)

3. Jaime Herrera  
 Beutler  
 (R)

4. Dan Newhouse  
 (R)

4. Dan Newhouse  
 (R)

5. Cathy McMorris Rodgers  
 (R)



# PACIFIC CREST NATIONAL SCENIC TRAIL

and Washington Congressional Districts,  
 115th United States Congress

— Pacific Crest National Scenic Trail

1 Congressional Districts  
 115th Congress

National Forests

Wilderness Land

National Land

BLM Land

Other Federal  
 Land

0 miles

100 miles



Designed  
 and produced by  
 RS Geospatial Services  
 12/05/12

