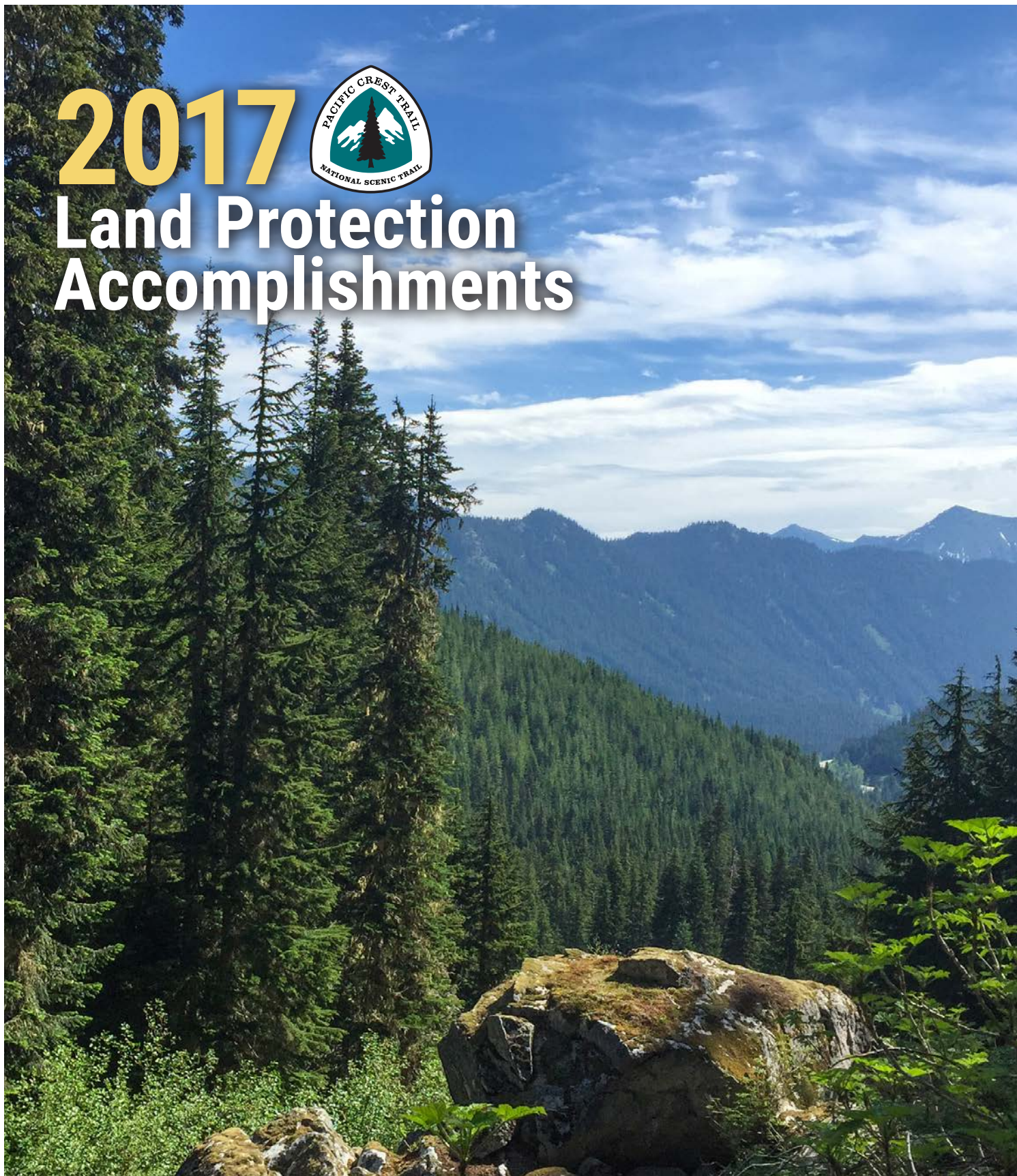


2017



Land Protection Accomplishments



Conserving Open Space and Recreational Access On the Pacific Crest National Scenic Trail



View from the Pacific Crest Trail of Donomore Meadows near the California/Oregon border, 245 acres successfully acquired in 2016 by the PCTA.

For most of the 2,650 miles of the PCT from Mexico to Canada, you can experience some of the most sublime outdoor scenery in the world. But in far too many spots along the way, this experience is being threatened by development, resource extraction, inappropriate barriers, and unsafe road walks.

Fifty years after the 1968 Congressional designation of the PCT as one of the first National Scenic Trails, it is still not completely protected. **Approximately 10 percent of the trail remains on private land** with little in place to help protect the trail experience for future generations.

The PCT's land acquisition program works with willing sellers to conserve land along the entire 2,650 miles of the trail to protect the trail experience, enhance recreational access to our public lands, protect habitat for sensitive species, and secure critical watersheds. While federal agencies take the lead role in acquiring lands to permanently protect the PCT, they also rely heavily on the valued assistance of private, non-profit partners.

The 2017 land acquisitions are a prime example of this public-private partnership in action. The properties highlighted in this report were accomplished through the combined work of the **U.S. Forest Service, Bureau of Land Management, Pacific Crest Trail Association, Pacific Forest Trust, San Dieguito River Valley Conservancy, and The Western Rivers Conservancy.**



2017 Pacific Crest Trail Land Protection by the Numbers...

20 parcels
acquired

954 acres
of habitat for the
northern spotted owl
and Pacific fisher
protected

1,556 acres
protected
514 acres to federal ownership
1,042 acres to nonprofit ownership

\$2,532,000
invested in land acquisitions

\$934,000 federal funding
\$1,598,000 private funding

3 miles
of streams protected
providing habitat for
ESA listed fish species:
• coho salmon
• steelhead
• chinook
• bull trout

4 miles
of additional PCT
viewshed protected

1.65 miles
of the PCT were acquired

Scott Mountain

Western Rivers Conservancy



WESTERN RIVERS
CONSERVANCY

Total Acreage: 640 acres

Miles of PCT: none

Final Purchase Price:
Unknown (part of a larger acquisition)

Funding Source:
Private Donations

Acquisition Entity:
Western Rivers Conservancy

Third Party Facilitator: n/a

Acquisition Date:
March 31, 2017

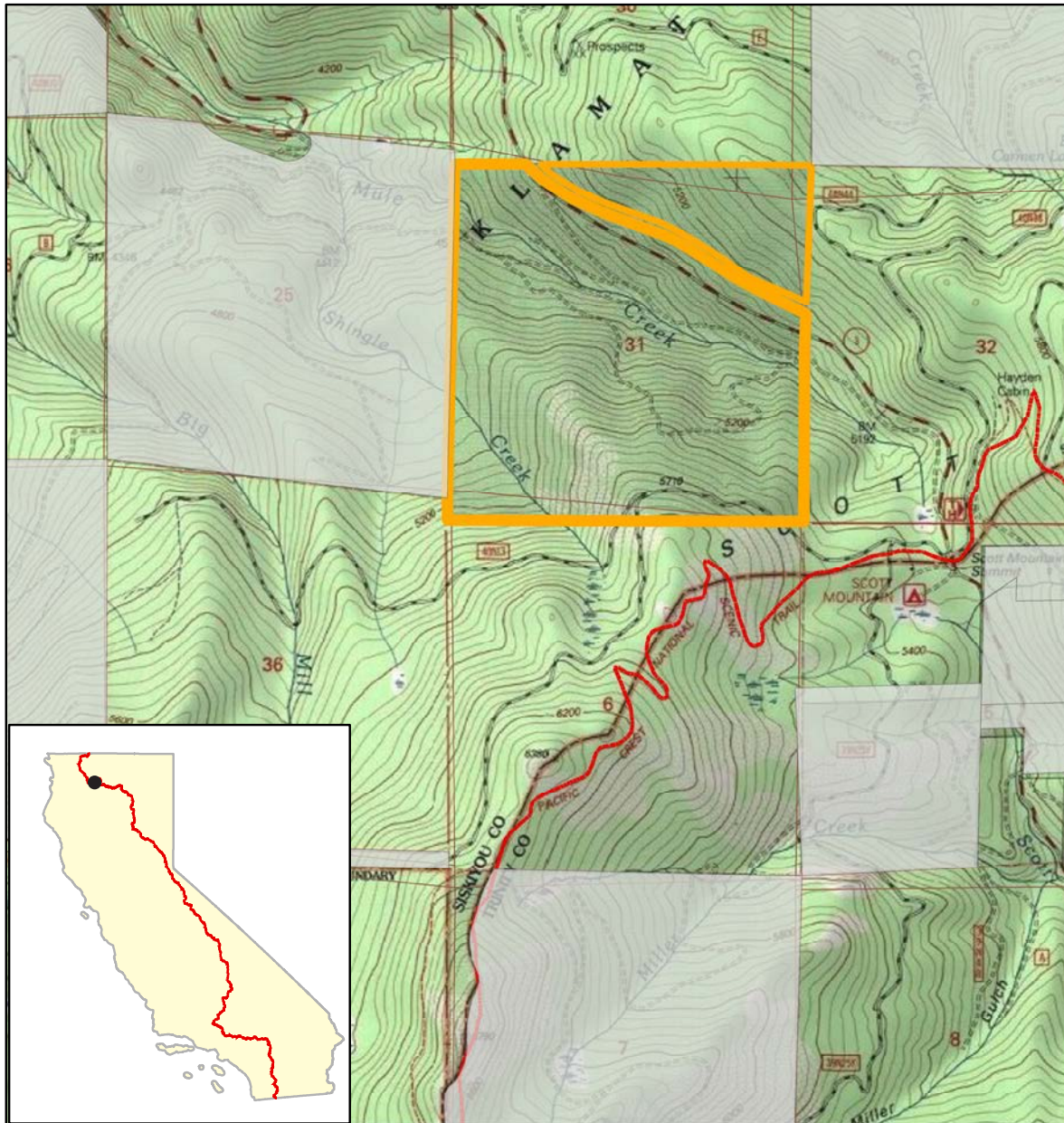
Location: The Scott Mountain Property is in Siskiyou County, CA north of the Trinity Alps Wilderness Area and northwest of the Scott Mountain summit. PCT mile 1,558.



Special Benefits: The Scott Mountain property provides watershed protection to the Pacific Crest National Scenic Trail as well as critical watershed and habitat conservation. Just over 2 miles of crucial headwaters streams of the Scott River run through the property. The Scott River is California's most important stream for threatened coho salmon, producing over half the state's entire population.

The property provides habitat for threatened northern spotted owl, as well as bald eagle, Pacific fisher and American marten. The acquired property is adjacent to the Scott Mountain Botanical Area and it possesses serpentine soils harboring rare and endemic plants, including the carnivorous California pitcher plant, or cobra lily.

Photo courtesy of the Western Rivers Conservancy.



Legend

— Pacific Crest National Scenic Trail

□ Scott Mountain Parcel

■ National Forest System Land

■ Private Lands

0 0.25 0.5 0.75 1 Miles



Map Created- 01/15/18
By Pacific Crest Trail Association

Service Layer Credits: Copyright:© 2013 National Geographic Society, i-cubed

Scott Mountain Parcel

Township 40 North, Range 07 West, Section 31
Siskiyou County, CA

USDA Forest Service, Pacific Southwest Region
Klamath National Forest

Congressional District CA-01

PCT mile 1,558

Mountcrest Forest

Bureau of Land Management



Total Acreage: 314 acres

Miles of PCT: 0.9 miles

Final Purchase Price:
\$744,000

Funding Source:
FY15 LWCF

Acquisition Entity:
Bureau of Land Management

Third Party Facilitator:
Pacific Forest Trust

Acquisition Date:
May 12, 2017

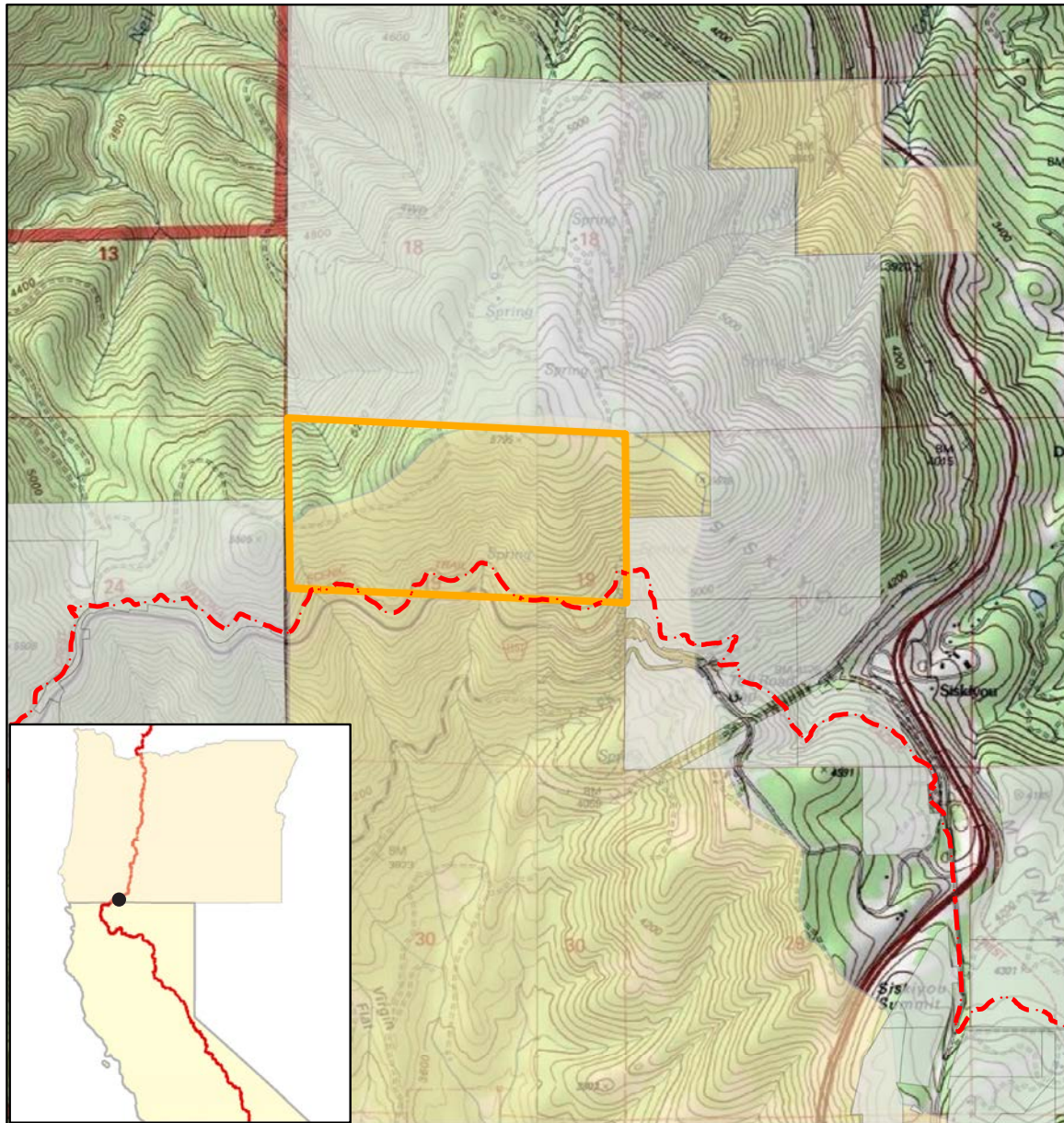
Location: Just west of
Interstate 5, minutes from
Ashland, Oregon in Jackson
County. PCT mile 1,714.



Special Benefits: The Mountcrest Forest acquisition protects nearly 1 mile of the Pacific Crest National Scenic Trail and its corridor. At the heart of one of the most biodiverse spots on the planet, it straddles the crossroads of the Klamath, Siskiyou, and Cascade mountain ranges.

It provides an essential connection for wildlife between the Cascade Siskiyou National Monument and the Rogue River National Forest. Threatened northern spotted owls nest on the adjacent National Forest. Conserving Mountcrest's complex, older forests helps achieve goals for the owl's recovery, and also benefits species like the Pacific fisher, who are known to traverse the property.

Photo courtesy of the Pacific Forest Trust.



Legend

- Pacific Crest National Scenic Trail
- Mountcrest Forest Parcel
- National Forest System Land
- Private Lands
- Bureau of Land Management

0 0.25 0.5 0.75 1 Miles



Map Created- 01/15/18
By Pacific Crest Trail Association

Mountcrest Forest Parcel

Township 40 South, Range 02 East, Section 19
Jackson County, OR

U.S. Department of Interior
Bureau of Land Management

Congressional District OR-02

PCT mile 1,714

Service Layer Credits: Copyright:© 2013 National Geographic
Society, i-cubed

San Felipe Hills

Bureau of Land Management



Total Acreage: 200 acres

Miles of PCT: none

Final Purchase Price:
\$190,000

Funding Source:
Pacific Crest Trail
Mitigation Funds

Acquisition Entity:
Bureau of Land Management

Third Party Facilitator:
San Dieguito River Valley
Conservancy

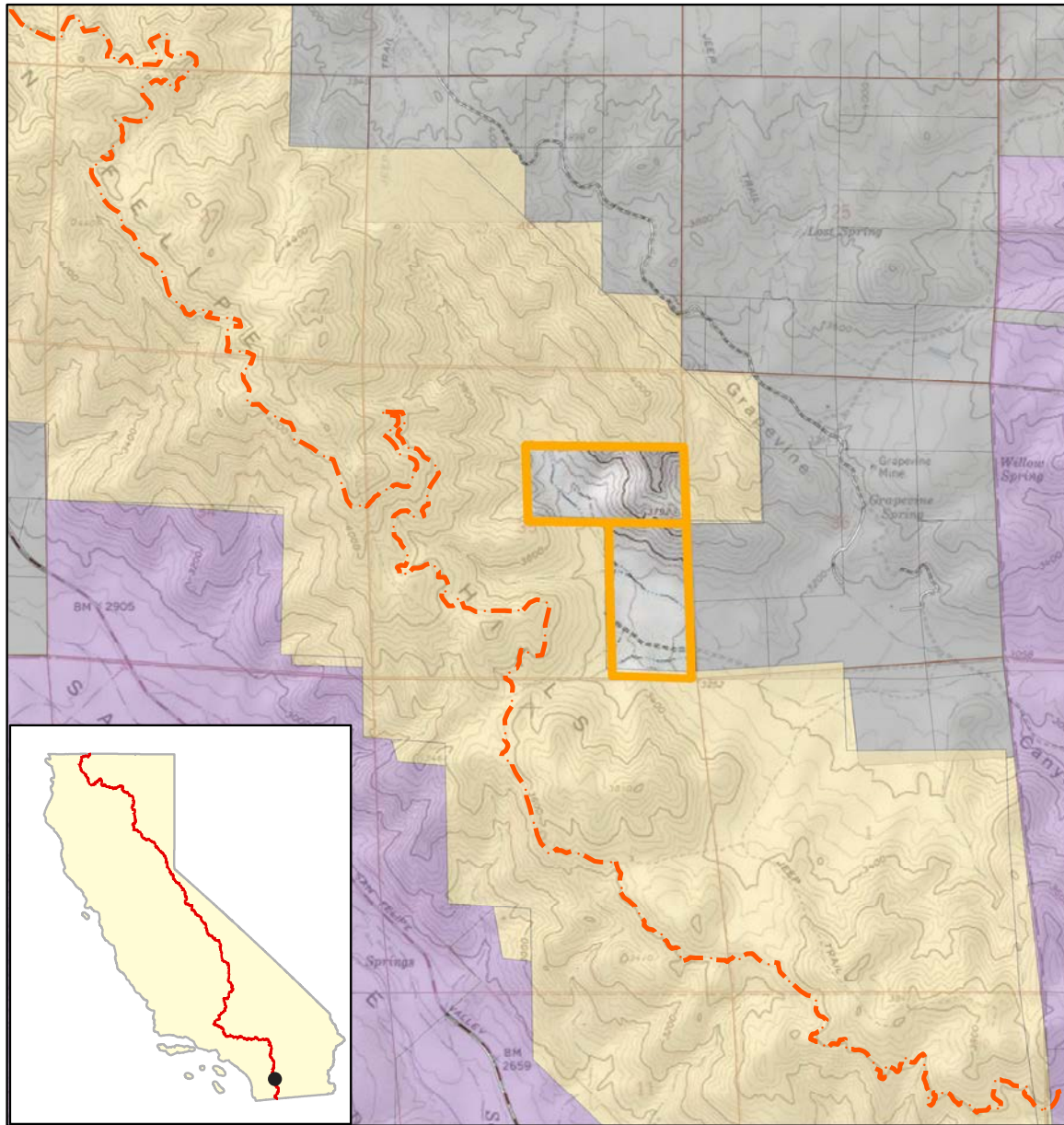
Acquisition Date:
August 3, 2017

Location: In the San Felipe
Hills of San Diego County, CA.
PCT mile 92.



Special Benefits: This property sits within the San Felipe Hills Wilderness Study area and is within a quarter-mile of the Pacific Crest National Scenic Trail. Its acquisition and permanent protection will preserve the viewshed and open space character of the PCT corridor.


Photo courtesy of the San Dieguito River Valley Conservancy.



Legend

 Pacific Crest National Scenic Trail

 San Felipe Hills Parcel

 Bureau of Land Management

 California State Lands

 Private Lands

0 0.25 0.5 0.75 1 Miles



Map Created- 01/15/18
By Pacific Crest Trail Association

Service Layer Credits: Copyright:© 2013 National Geographic
Society, i-cubed

San Felipe Hills Parcel

Township 11 South, Range 04 East, Section 35
San Diego County, CA

U.S. Department of Interior
Bureau of Land Management

Congressional District CA-50

PCT mile 92

Stevens Pass

Pacific Crest Trail Association



Total Acreage: 402 acres

Miles of PCT: 3/4 mile

Final Purchase Price:
\$1,598,000

Funding Source:
Private Donations and a loan
from The Conservation Fund

Acquisition Entity:
Pacific Crest Trail Association

Third Party Facilitator: n/a

Acquisition Date:
November 15, 2017

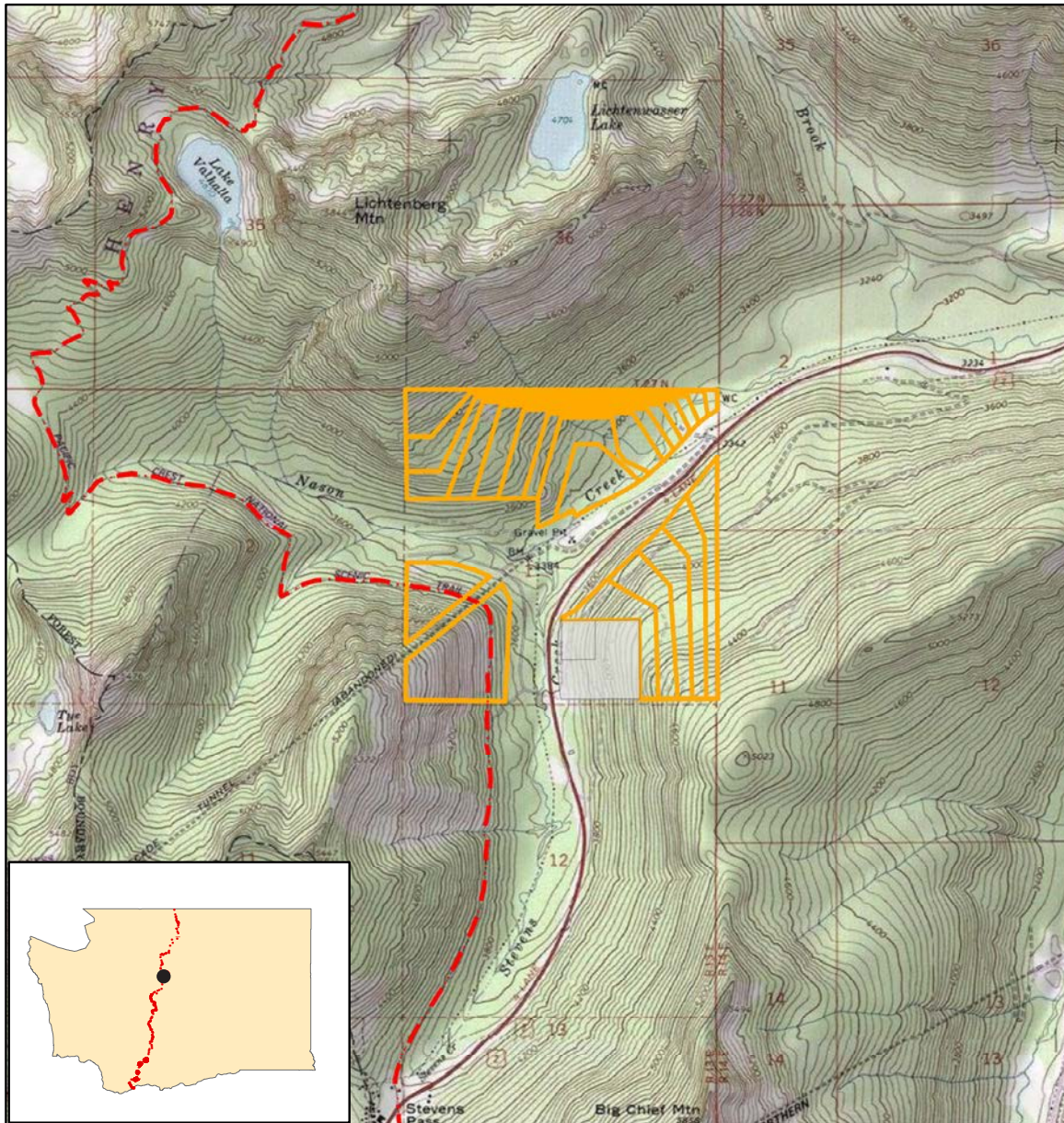
Location: 78 miles east of
Seattle near US Highway 2 in
Chelan County, WA.
PCT mile 2,463.



Special Benefits: The Pacific Crest Trail at Stevens Pass is a gateway to some of the most spectacular wilderness in the North Cascades. The Stevens Pass trailhead is also an important PCT access point for millions of people in the Greater Seattle region. Just to the south lies the spectacular Alpine Lakes Wilderness, and to the north are the equally magnificent Henry M. Jackson and Glacier Peak wilderness areas.

In early 2015, the property's private owner, who had been seeking to sell the land, stated their intention to place a fence across the trail and close the PCT to public access through the parcel. Recognizing the potentially disastrous impact of a trail closure and the threat that development of the property would pose, the Pacific Crest Trail Association, working alongside the U.S. Forest Service, acquired the property to hold it until the U.S. Forest Service can acquire it.

Photo courtesy of the Pacific Crest Trail Association.



Legend

- Pacific Crest National Scenic Trail
- Stevens Pass Property
- National Forest System Land
- Private Lands

0 0.25 0.5 0.75 1
Miles



Map Created- 01/15/18
By Pacific Crest Trail Association

Stevens Pass Parcel

Township 26 North, Range 13 East, Section 01
Chelan County, WA

USDA Forest Service, Pacific Northwest Region
Okanogan-Wenatchee National Forest

Congressional District WA-08

PCT mile 2,463

Service Layer Credits: Copyright:© 2013 National Geographic
Society, i-cubed

PCTA Land Protection Advisory Council Members

Chair: Liz Bergeron – Sacramento, California
Executive Director and CEO, Pacific Crest Trail Association

David Beaver – Arlington, Virginia
Retired, Bureau of Land Management, National Land and Water Conservation Fund Program Lead

Bill Dahnke – Poway, California
Retired, Telecommunications Industry Executive

Mike Dawson – Vashon, Washington
Director of Trail Operations, Pacific Crest Trail Association

Denise Gilbert – Portola Valley, California
Semi-retired, Biotechnology Industry Executive
Board of Directors, Pacific Crest Trail Association

Darrell Hallett – Seattle, Washington
Semi-retired attorney, Colvin + Hallett

John Hoffnagle – Portland, Oregon
Retired, Executive Director, Oregon State Parks Foundation
Board of Directors, Pacific Crest Trail Association

Terry Marbach – Columbus, Indiana
Retired, Kirr, Marbach & Company (investment management)

Paul Newhagen – Los Altos, California
Retired, Chief Financial Officer and board member, Altera Corporation

John Pardee – Berkeley, California
Retired, Counsel in the Western Division of The Trust for Public Land

Tom Reveley – Bainbridge Island, Washington
Managing Director of Wealth Management, Merrill Lynch
Board of Directors, Pacific Crest Trail Association

Megan Wargo – San Mateo, California
Director of Land Protection, Pacific Crest Trail Association