

2018



Land Protection Accomplishments



The Cascade Range and Mt. Rainier in Central Washington



Conserving Open Space and Recreational Access On the Pacific Crest National Scenic Trail



Picayune Lake, in Northern California's Trinity Alps

For most of the 2,650 miles of the PCT from Mexico to Canada, you can experience some of the most sublime outdoor scenery in the world. But in far too many spots along the way, this experience is being threatened by development, resource extraction, inappropriate barriers, and unsafe road walks.

Fifty years after the 1968 Congressional designation of the PCT as one of the first National Scenic Trails, it is still not completely protected. **Approximately 10 percent of the trail remains on private land** with little in place to help protect the trail experience for future generations.

The PCTA's land acquisition program works with willing sellers to conserve land along the entire 2,650 miles of the trail to protect the trail experience, enhance recreational access to our public lands, protect habitat for sensitive species, and secure critical watersheds. While federal agencies take the lead role in acquiring lands to permanently protect the PCT, they also rely heavily on the valued assistance of private, non-profit partners.

Our 2018 land acquisitions are a prime example of this public-private partnership in action. The properties highlighted in this report were accomplished through the combined work of the **Anza-Borrego Foundation, Pacific Crest Trail Association, Pacific Forest Trust, The Nature Conservancy, The Trust for Public Land, and the U.S. Forest Service.**



2018 Pacific Crest Trail Land Protection by the Numbers...

10 parcels
acquired

3,080 acres
of habitat for federally
listed species
including:

- Quino checkerspot butterfly
- Northern spotted owl
- Arroyo toad
- Gray wolves

28 miles
of streams in four
watersheds providing
habitat for ESA listed
fish species:

- salmon
- steelhead
- bull trout

3,107 acres
protected

1,280 acres to **federal** ownership
1,827 acres to **nonprofit** ownership

\$8,256,500
invested in land acquisitions

\$2,455,000 federal funding

\$4,600,000 state funding

\$1,201,500 private funding

6 miles
of additional PCT
viewshed protected

1.02 miles
of the PCT were acquired

Mountcrest Forest Conservation Easement

Pacific Forest Trust



PACIFIC FOREST TRUST

Total Acreage: 1,771 acres**Miles of PCT:** 1.0**Final Purchase Price:**
\$3,200,000**Funding Sources:**

Oregon Department of Fish and Wildlife, U.S. Fish and Wildlife Service, Oregon Watershed Enhancement Board, M.J. Murdock Charitable Trust, Doris Duke Charitable Foundation, landowner donation, and Pacific Crest Trail Association

Acquisition Entity:

Pacific Forest Trust

Third Party Facilitator: n/a**Acquisition Date:**

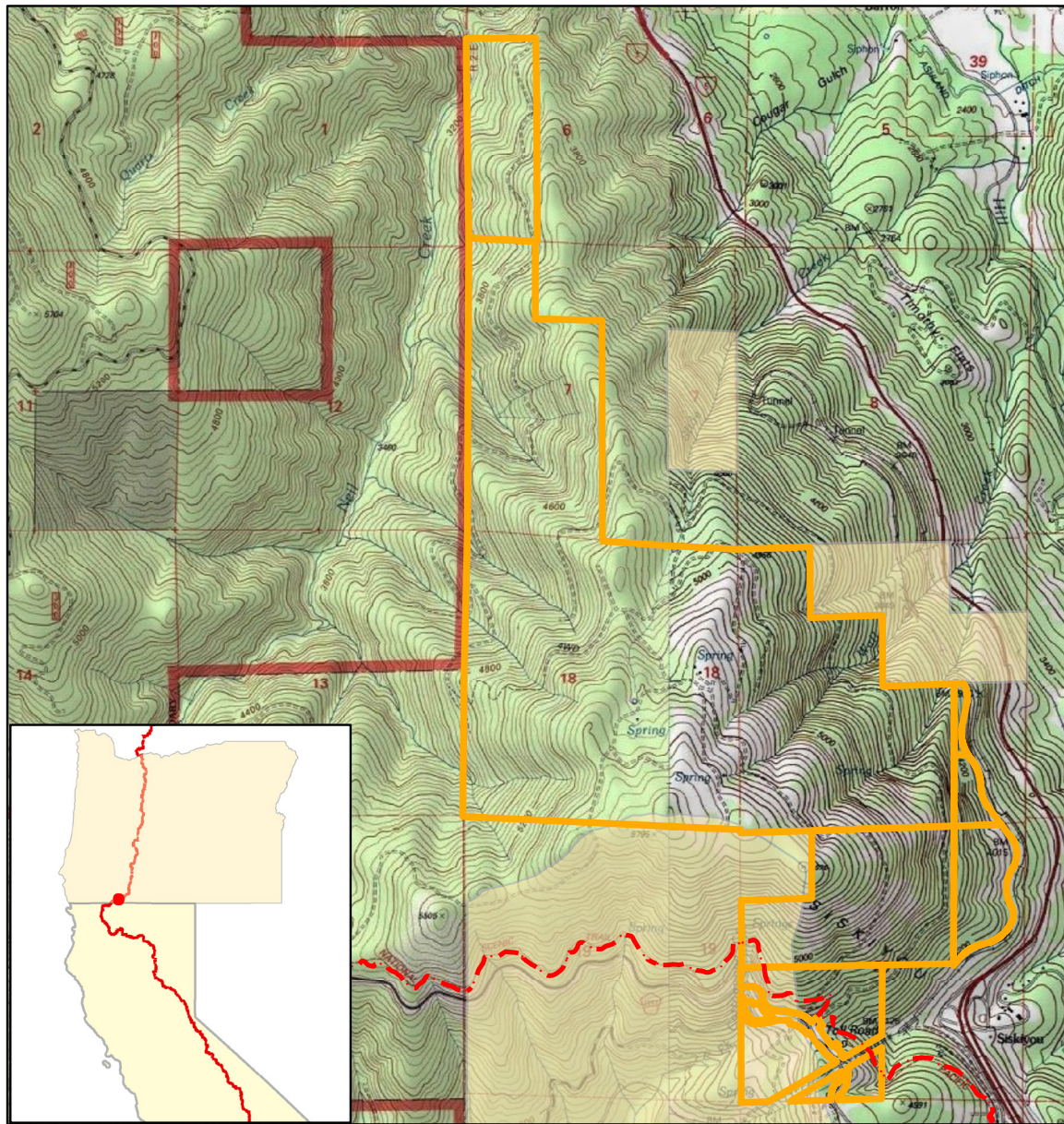
January 16, 2018

Location: Just west of Interstate 5, minutes from Ashland, Oregon in Jackson County. PCT mile 1,715.





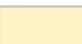
Special Benefits: Through collaboration this project protected the largest remaining non-industrial forest near Ashland, Oregon. The 1,771-acre Mountcrest Forest has been managed by the Parsons family for nearly 100 years.

Sitting on the historic Siskiyou Pass, this conservation easement permanently protects a mile of the Pacific Crest National Scenic Trail, habitat for numerous imperiled species, and a key wildlife bridge between the Rogue River Siskiyou National Forest and the Cascade Siskiyou National Monument.

Photos courtesy of the Pacific Forest Trust.



Legend

-  Pacific Crest National Scenic Trail
-  Mountcrest Forest Easement
-  National Forest System Land
-  Private Lands
-  Bureau of Land Management

0 0.25 0.5 0.75 1
Miles



Map Created- 12/15/18
By Pacific Crest Trail Association

Mountcrest Forest Conservation Easement

Township 40 South, Range 02 East,
Sections 6, 7, 17, 18, and 20
Jackson County, OR

Pacific Forest Trust

Congressional District OR-02

PCT mile 1,715

Service Layer Credits: Copyright:© 2013 National Geographic
Society, i-cubed

Central Cascades Parcels

U.S. Forest Service



Total Acreage: 1,280 acres

Miles of PCT: none

Final Purchase Price:
\$2,455,000

Funding Source:
FY15 and 16 LWCF

Acquisition Entity:
U.S. Forest Service

Third Party Facilitator:
The Nature Conservancy

Acquisition Date:
May 20, 2018

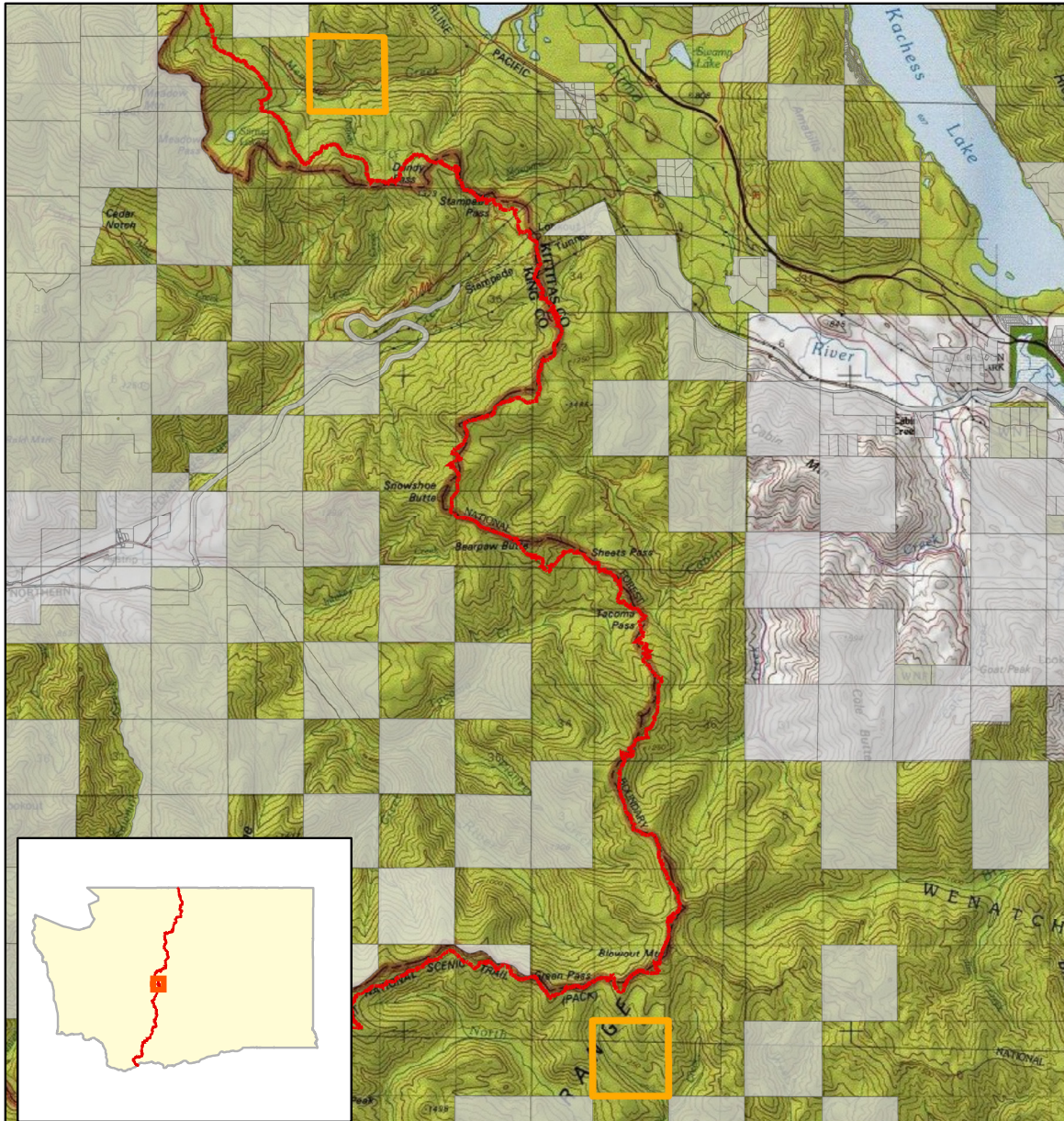
Location: These parcels are part of the "Plum Creek Checkerboard" in Central Washington. Located south of Snoqualmie Pass in Kittitas County. PCT miles 2,354 and 2,377.






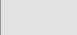
Special Benefits: Both properties lie within the viewshed of the Pacific Crest National Scenic Trail and are in close proximity to the greater Seattle area. Tributaries of the Little Naches, which run down from the Blowout Mountain parcel, are major spawning areas for Middle Columbia River steelhead trout. They also constitute part of a Tier Key 1 Watershed under the Northwest Forest Plan, a designation which was established to contribute to protection of habitat for and conservation of anadromous salmonids and bull trout.


The Meadow Creek parcel and the nearby Keechelus Lake are located within the heart of the Yakima Basin Integrated Plan, an initiative which is supported by a coalition of conservation groups, tribes, agricultural interests, irrigators and government agencies in order to ensure long term water supply in the face of climate change. The Meadow Creek area also provides habitat for Endangered gray wolves and Threatened Canada lynx, northern spotted owls, and Marbled Murrelets.

Photo courtesy of The Nature Conservancy.



Legend

-  Pacific Crest National Scenic Trail
-  Central Cascades Parcels
-  National Forest System Land
-  Private Lands

0 1 2 3 4 Miles 

Map Created- 12/15/18
By Pacific Crest Trail Association

Service Layer Credits: Copyright:© 2013 National Geographic
Society, i-cubed

Central Cascades Parcels

Township 19 North, Range 12 East,
Section 23 and Township 21 North,
Range 11 East, Section 15 Kittitas County, WA

USDA Forest Service, Pacific Northwest Region
Okanogan-Wenatchee National Forest

Congressional District WA-08

PCT miles 2,354- 2,377

Deal Property

Anza-Borrego Foundation



Total Acreage: 5 acres

Miles of PCT: none

Final Purchase Price:
\$1,500

Funding Source:
Private donations

Acquisition Entity:
Anza-Borrego Foundation

Third Party Facilitator:
n/a

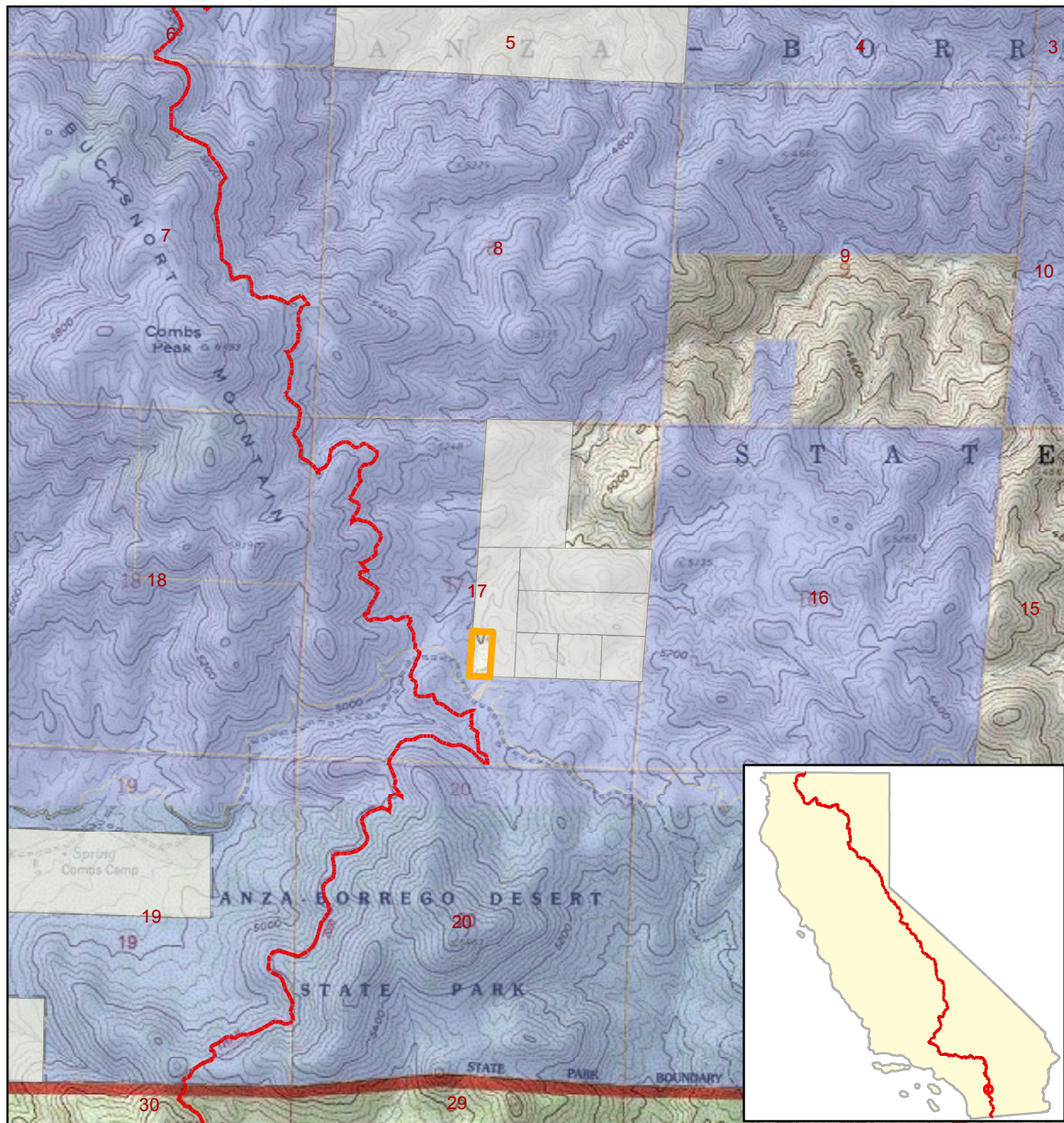
Acquisition Date:
April 3, 2018

Location: The property is an inholding in the Anza-Borrego Desert State Park in San Diego County. PCT Mile 127.



Special Benefits: This property is undeveloped and provides viewshed protection to the PCT. It provides habitat for the Quino Checkerspot butterfly, a federally listed endangered species, and is an important piece of a wildlife corridor between the desert floor and higher elevations within the Anza-Borrego Desert State Park (ABDSP). Its acquisition by the Anza-Borrego Foundation ensures the property's permanent protection and ultimate inclusion in the ABDSP.

Photo of a Quino checkerspot butterfly by Andrew Fisher, USFWS volunteer biologist.



Legend

- Pacific Crest National Scenic Trail
- Deal Property
- Bureau of Land Management
- California State Lands
- Private Lands

0 0.25 0.5 0.75 1 Miles

Map Created- 12/15/18
By Pacific Crest Trail Association

Service Layer Credits: Copyright:© 2013 National Geographic
Society, I-cubed

Deal Property

Township 09 South, Range 05 East, Section 17
San Diego County, CA

California State Parks
Anza-Borrego Desert State Park

Congressional District CA-50

PCT mile 127

Robin's Nest

Mountains Recreation & Conservation Authority



Total Acreage: 51 acres

Miles of PCT: .02 miles

Final Purchase Price:
\$2,600,000

Funding Source:
Santa Monica Mountains
Conservancy and Wildlife
Conservation Board

Acquisition Entity:
Mountains Recreation &
Conservation Authority

Third Party Facilitator:
Trust for Public Land

Acquisition Date:
June 29, 2018

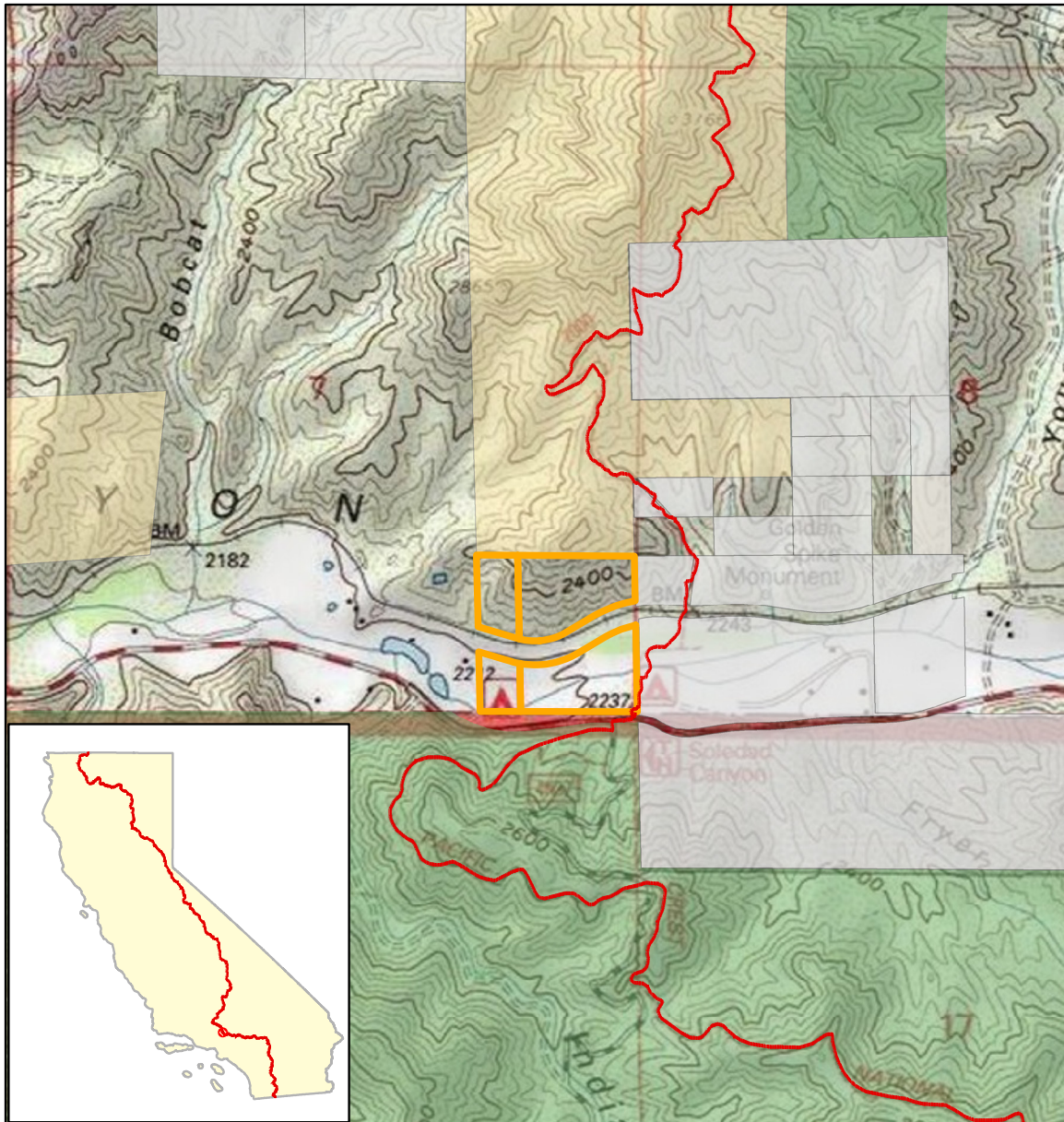
Location: Located in Soledad
Canyon in Los Angeles
County. This property is just
west of the Golden Spike
Monument on the PCT. PCT
Mile 444.



Special Benefits: The Pacific Crest National Scenic Trail crosses the southeastern corner of this property. Acquisition of the Robin's Nest property connects two previously disconnected parcels of public land owned by the U.S. Forest Service and the Bureau of Land Management. Formerly an R.V. Park, this property was heavily damaged by the Sand Fire in July 2016. The Mountains Recreation & Conservation Authority will be restoring the property to enhance the wildlife habitat onsite and to allow for the property to be reopened for public access.

The property provides habitat for a diverse assemblage of threatened and endangered species including 24 acres of critical habitat for the federally endangered arroyo toad. The water flowing through this property benefits the federally endangered Southern California Steelhead. Half a mile of the Santa Clara River, one of the few remaining free-flowing riparian systems in southern California, runs across the property. The Project will also protect over six acres of wetlands and more than 23 acres of permeable soils for groundwater recharge.

Photo by Pacific Crest Trail Association



Legend

- Pacific Crest National Scenic Trail
- Robin's Nest Parcel
- National Forest System Land
- Bureau of Land Management
- Private Lands

0 0.1 0.2 0.3 0.4
Miles



Map Created- 12/15/18
By Pacific Crest Trail Association

Robin's Nest Parcel

Township 04 North, Range 13 West, Section 07
Los Angeles County, CA

Mountains Recreation & Conservation Authority

Congressional District CA-25

PCT mile 444

Service Layer Credits: Copyright:© 2013 National Geographic
Society, i-cubed

Transferred to USFS Ownership

While the PCTA works to identify and acquire (or assist in the acquisition of) properties along the Pacific Crest Trail, we do not seek permanent ownership of these properties. Acquisitions typically involve partnerships with federal agencies, land trusts, or other entities for whom long-term land ownership is more appropriate and inline with the agency or organization's mission. The following properties, acquired by the PCTA in 2016 and 2017, were successfully transferred to the U.S. Forest Service in 2018.



Landers Meadow Southern Sierra Nevada, Kern County, CA

The Landers Meadow property contains a montane meadow ringed by sagebrush and conifer forest. It shares 3 boundaries with the Sequoia National Forest. The PCT runs adjacent to the property for a half-mile and provides scenic views along the trail as well as important habitat for 78 bird species, black bears, mountain lions, and mule deer. There are multiple springs on the property that feed Landers Creek and have the potential to open up a new treatable drinking water source for trail users in the dry southern portion of the PCT. Landers Meadow is part of the headwaters of Kelso Creek, a desert stream that is crucial to the Kelso Creek Important Bird Area identified by the Audubon Society.



Donomore Meadows Northern Siskiyou County, CA

At the south end of Donomore Meadows near the California-Oregon border, the PCT crosses Donomore Creek and walks the western edge of a meadow for approximately half a mile while meandering in and out of a mixed conifer forest. The meadows provide habitat for rare plant species, northern spotted owl, great gray owl, deer, elk and wolves. Its permanent conservation will protect heart-grabbing views from the PCT, critical wildlife habitat and an important water source for people and animals, Donomore Creek.



Stevens Pass Chelan County, WA

The PCT at Stevens Pass is a gateway to some of the most spectacular wilderness in the North Cascades. The Stevens Pass trailhead is also an important PCT access point for millions of people in the Greater Seattle region. In early 2015, the property's private owner, who had been seeking to sell the land, stated their intention to place a fence across the trail and close the PCT to public access through the parcel. Recognizing the potentially disastrous impact of a trail closure and the threat that development of the property would pose, the PCTA, working alongside the U.S. Forest Service, acquired the property to hold it until the Forest Service acquired it in 2018.

Upcoming Projects

Following are two important land protection projects currently in progress.



Picayune Lake

Trinity Alps, Siskiyou and Trinity Counties, CA

In 2018, the Picayune Lake property in Northern California went up for auction. This 690-acre property contains the entire Picayune Lake, a string of open meadows that includes a variety of wildflowers such as the California pitcher plant, and 1.2 miles of the Pacific Crest National Scenic Trail. The timeline of the auction did not give PCTA or our federal partners enough time for due diligence or fundraising to purchase the tract. Luckily a small group of conservation buyers stepped in to purchase the property and take it off the market. The buyers will work with the PCTA on a long-term conservation outcome for the property that will permanently protect this section of the PCT.



Trinity Divide

Trinity Alps, Siskiyou and Trinity Counties, CA

In 2018, the PCTA and our partners the Michigan-California Timber Company, Trust for Public Land and U.S. Forest Service secured all necessary funding to complete the 10,500-acre Trinity Divide acquisition in Northern California. The project will protect 17 miles of the Pacific Crest Trail, headwaters of four river systems, wildlife habitat for multiple listed species, and create new public access to ten alpine lakes. We expect the project to close in the first half of 2019.

PCTA Land Protection Advisory Council Members

Chair: Liz Bergeron – Sacramento, California
Executive Director and CEO, Pacific Crest Trail Association

David Beaver – Palm Springs, California
Retired, Bureau of Land Management, National Land and Water Conservation Fund Program Lead

Bill Dahnke – Poway, California
Retired, Telecommunications Industry Executive

Denise Gilbert – Portola Valley, California
Semi-retired, Biotechnology Industry Executive
Board of Directors, Pacific Crest Trail Association

John Hoffnagle – Portland, Oregon
Retired, Executive Director, Oregon State Parks Foundation
Board of Directors, Pacific Crest Trail Association

Terry Marbach – Columbus, Indiana
Retired, Kirr, Marbach & Company (investment management)

Paul Newhagen – Los Altos, California
Retired, Chief Financial Officer and board member, Altera Corporation

John Pardee – Berkeley, California
Retired, Counsel in the Western Division of The Trust for Public Land

Tom Reveley – Bainbridge Island, Washington
Managing Director of Wealth Management, Merrill Lynch
Board of Directors, Pacific Crest Trail Association

Megan Wargo – San Mateo, California
Director of Land Protection, Pacific Crest Trail Association