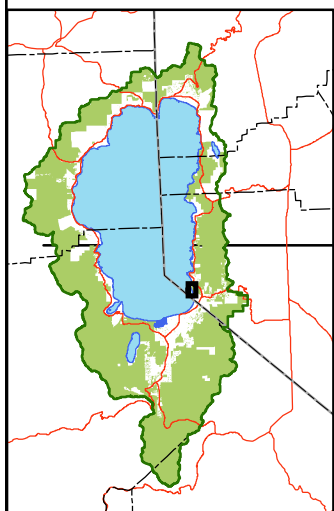
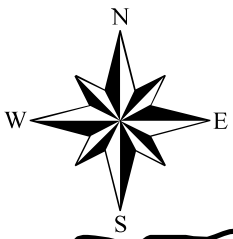
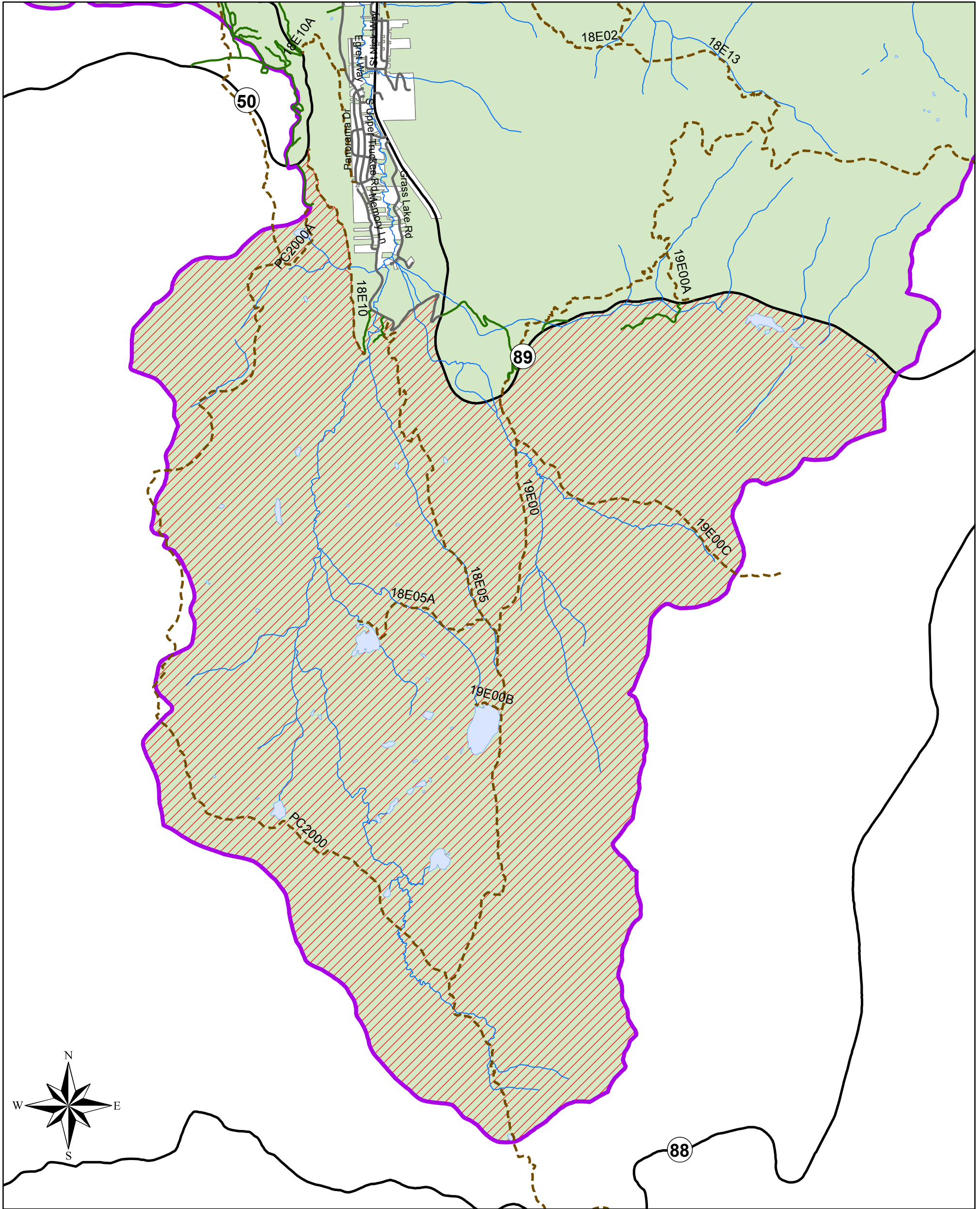


Exhibit B: Meiss Backcountry Closure Area



2021 BACKCOUNTRY & WILDERNESS CLOSURE Forest Order No. 19-21-05 Lake Tahoe Basin Management Unit



- | | |
|-------------------------|------------------------------|
| Forest Closure Area | Forest Service Land |
| Stream/River: Perennial | Other Ownership |
| Waterbody | Highway |
| Wilderness | Local Road |
| LTBMU Forest Boundary | National Forest System Roads |

0 0.5 1 Miles

Map by LTBMU
August 18, 2021

The Forest Service uses the most current and complete data available. GIS data and product accuracy may vary. They may be: developed from sources of differing accuracy; accurate only at certain scales; based on modeling or interpretation; incomplete while being created or revised; etc. Using GIS products for purposes other than which they were created, may yield inaccurate or misleading results. The Forest Service reserves the right to correct, update, modify or replace GIS products without notification.